



May 2017



CONDOR FOTO ha compiuto 51 anni nel 2016, è stata infatti fondata nel lontano Agosto del 1965 e propone ancora oggi, con entusiasmo e vitalità, una gamma di prodotti e di soluzioni originali per la fotografia professionale.

Condor Foto will have its 51st birthday in 2016, as it was founded in 1965 and offers, still today, with enthusiasm and vigor, products and original solutions for professional photography.

Quello che qui presentiamo è il catalogo generale, suddiviso nelle cinque aree principali di attività della nostra azienda:

What we present here is the general catalog, divided into five main areas of activity of our company:

PRODOTTI CHIMICI
EFFETTI SPECIALI
ACCESSORI PER IL LABORATORIO
PRODOTTI PER LO STUDIO PROFESSIONALE
FONDALI

CHEMICALS
SPECIAL EFFECTS
DARKROOM PRODUCTS
PROFESSIONAL STUDIO PRODUCTS
BACKGROUNDS

chemical products

Impossibile non conoscerli: i prodotti chimici della Condor Foto negli anni hanno opacizzato milioni di fotografie, eliminato miliardi di riflessi indesiderati, mascherato centinaia di negativi e soffiato su miliardi di particelle di pulviscolo, pulendo le superfici da fotografare, ma anche all'interno delle macchine fotografiche, dei computer e degli impianti hi-fi.

Impossible not to know: the chemicals of the Condor Foto over the years have opacified millions of photos , prevented billions of unwanted reflexes, masked hundreds of negatives and blown on billions of dust particles, cleaning the surfaces to be photographed but also inside the cameras, computers and hi-fi systems.

CONDOR JET MATT MATTING ANTI UV



It makes ink-jet cards opaque avoid fine colors degeneration, is water repellent, allows any image printed on paper-jet to stand the test of time.

Packages

Art. 00600 400 ml aerosol can



CONDOR JET GLOSSY GLAZING ANTI UV



It makes ink-jet cards glossy avoid fine colors degeneration, is water repellent, allows any image printed on paper-jet to stand the test of time.

Packages

Art. 00601 400 ml aerosol can



MASKOPRINT RED UNACTIVIC



To be used for masking negatives and b/w photographic prints. After reproduction the product may be easily removed by applying a little tape to the treated surface.

Packages

Art. 00900 100 ml

THINNER FOR MASKOPRINT



Is meant for dilution of Maskoprint.

Packages

Art. 00902 100 ml

ECO ANTISPOT DULLING ANTI REFLEX



It immediately makes any kind of reflecting surface opaque, prevents reflects (spots) when taking pictures of: mirrors, glasses, metals, etc. It does not leave fatty traces and can be removed with a dry cloth.

Packages

Art. 00300 400ml aerosol can

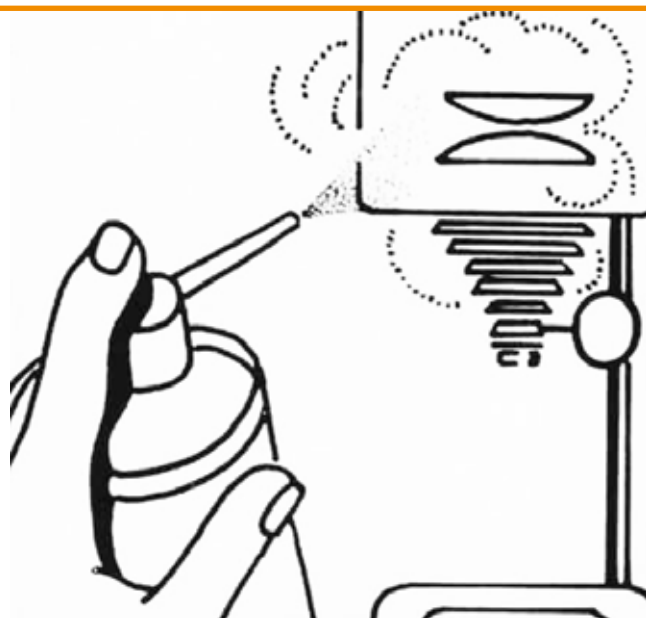
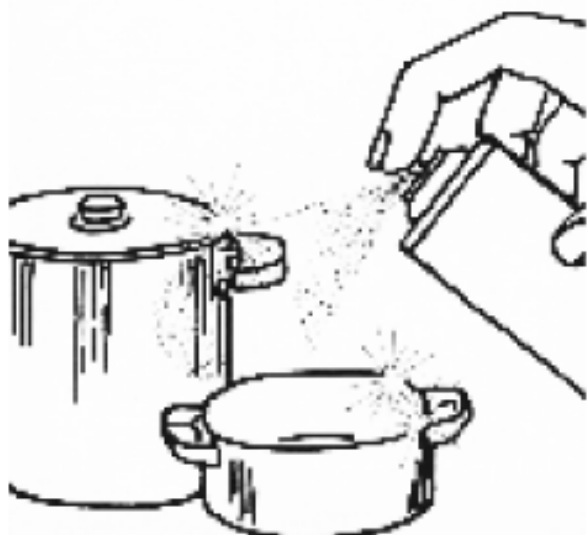
ECO PUFF-AIR CLEANING AIR SPRAY



Removes instantaneously dust even from lesser accessible parts. Eco Puff-Air is a must for cleaning delicate objects such as lenses, objectives, computers, scanners and any kind of mechanism sensitive to dust. Eco Puff-Air contains no CFC and is ozone friendly.

Packages

Art. 00402 400 ml aerosol can



CONDOR FIX REMOVER TEMPORARY ADHESIVE



Temporary adhesive for paper, cardboard, photo paper and ink-jet printing. It's possible to remove easily the cards and place them elsewhere. It's transparent, non-staining and lasts over time.

Packages

Art. 00701 400 ml aerosol can



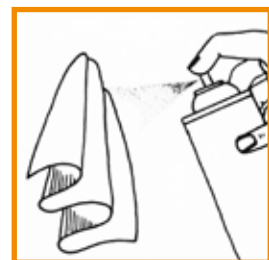
ECO MAGNODUST ANTISTATIC



It makes any kind of cloth anti-static, avoid the deposit of dust attracted by static electricity on any surface: negative films, darkroom equipments, photocopiers, computers etc..

Packages

Art. 00800 400 ml aerosol can



CONDOR FIX PERMANENT PERMANENT ADHESIVE



It permanently pastes paper, cardboard, photographic and Ink-jet paper on various types of material. It's transparent, non-staining and long lasting.

Packages

Art. 00700 400 ml aerosol can



ECO INOXYGEL ANTI OXYDIZING



Preserves chemical products (no food) easily liable to decomposition from oxydation.

Packages

Art. 00500 400 ml aerosol can



VIDEO CLEAN



Cleans perfectly monitors' crystal

Packages
Art. 00603 120 ml
aerosol can



PC CLEAN



It restores shine to plastic computer and peripherals.

Packages
Art. 00602 120 ml
aerosol can



special effect products

Altro che dinosauri!
I nostri effetti speciali sono sempre nuovi, ed offrono ai fotografi tante soluzioni pronte per l'uso: ghiaccio (piccolo, grande, galleggiante o pronto per il nuovo Titanic), gelato di tutti i gusti, schiuma di birra, ragnatele eccetera, per risultati sempre perfetti. Gli effetti speciali Condor Foto sono la marcia in più per le vostre fotografie di studio.

*Forget dinosaurs!
Our special effects are always new, and offer photographers many solutions ready to use: ice (small, large, float or ready for the new Titanic), Ice cream for all tastes, beer foam, cobwebs etc., to have always the best results. The Special Effects Condor Foto are the additional speed to your photographic studio.*

SMOKY



Spray into the air, Smoky produces haze or mist around light sources, giving beautiful three-dimensional effect when bright beams are visible against dark backgrounds. Large doses of Smoky give those foggy effect much sought and romantic, soft focus photography; a wonderful addition to fashion, advertising and still-life pictures.

Packages

Art. 01600 400 ml aerosol can



VAPOUR EFFECT



The “steaming” effect of a cup of coffee or a bowl of soup conveys a very realistic touch to the desired picture. To date a thousand tricks have been used to obtain this effect; Vapour Effect will produce this effect on any surface. This product consists of two components, which have to be put next to each other (no need to mix or superimpose them) to trigger off a thread of steam which will last some minutes. The 25 ml bottles containing the two Vapour Effect components have a spout allowing easy application of this product.

Packages

Art. 01601 2x25 ml



ICE CUBE EFFECT EFFETTO CUBETTI DI GHIACCIO



In order to create the effect of ice cubes entirely similar to the real ones but without the inconvenience of their rapid melting under the intense heat of the lamps and flash, just soak in water for about 24 hours the small cubes Ice Cube Effect. The cubes, once bloated with water, maintain this effect for several days without changing external substantial, just every now and then immerse them in water at most to get them back to their “optimal state”. If they are left drying can return real ice cubes soaking again in water. In photography or filming video and film, Ice Cube Effect has a yield of likelihood even higher than real ice.

Packages

Art. 01602 10 pieces



FLOATING GALLEGGIANTE PER ICE CUBE

When diluted in water, this liquid enables Ice Cube Effect, to float on the surface. The 120 ml package is enough for 2,5 liters of liquid.

Packages

Art. 01608 120 ml can





This product produces a frosted white coating to objects, looking as if they had just been taken out of the freezer, an effect that in nature lasts only a few seconds, but which now can be easily reproduced and maintained for a long time by just spraying Frost Effect to such objects.

Packages

Art. 01616 400 ml aerosol can



GRATED ICE EFFECT



Natural crushed ice melts so very quickly that it's almost impossible to photograph. But, a teaspoon of Grated Ice Effect left in glass of water for about 15 minutes gives a life-like crushed ice effect that keeps its shape for days. Grated Ice Effect can be renewed by adding a bit of water from time to time. Once expanded in water, it can be coloured with all sorts of liquids, including fruit juices, alcoholic beverages, tea etc.

Packages

Art. 01603 granulated 50 ml can

ICICLE EFFECT



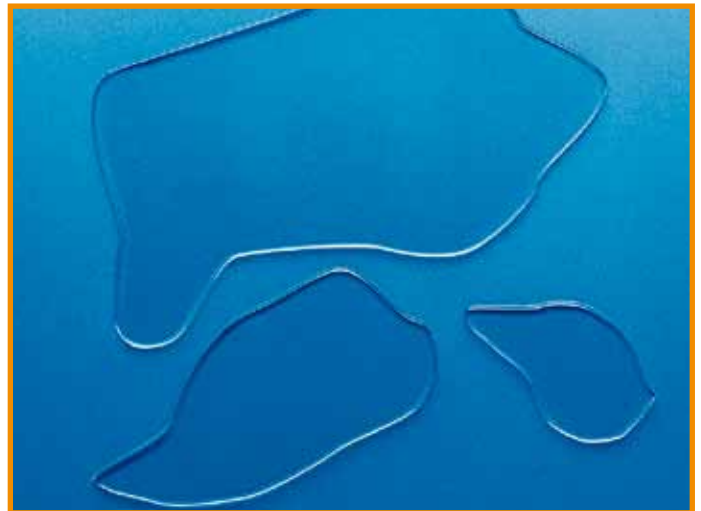
A clear and shining icicle. Useful to reproduce a "polar" scene in your warm studio. Two sizes.

Packages

Art. 01631 1 piece size 8 cm

Art. 01632 1 piece size 12 cm

PUDDLE EFFECT



Puddle Effect is always ready for your shots and can reproduce poured water on every kind of surfaces. Three sizes.

Packages

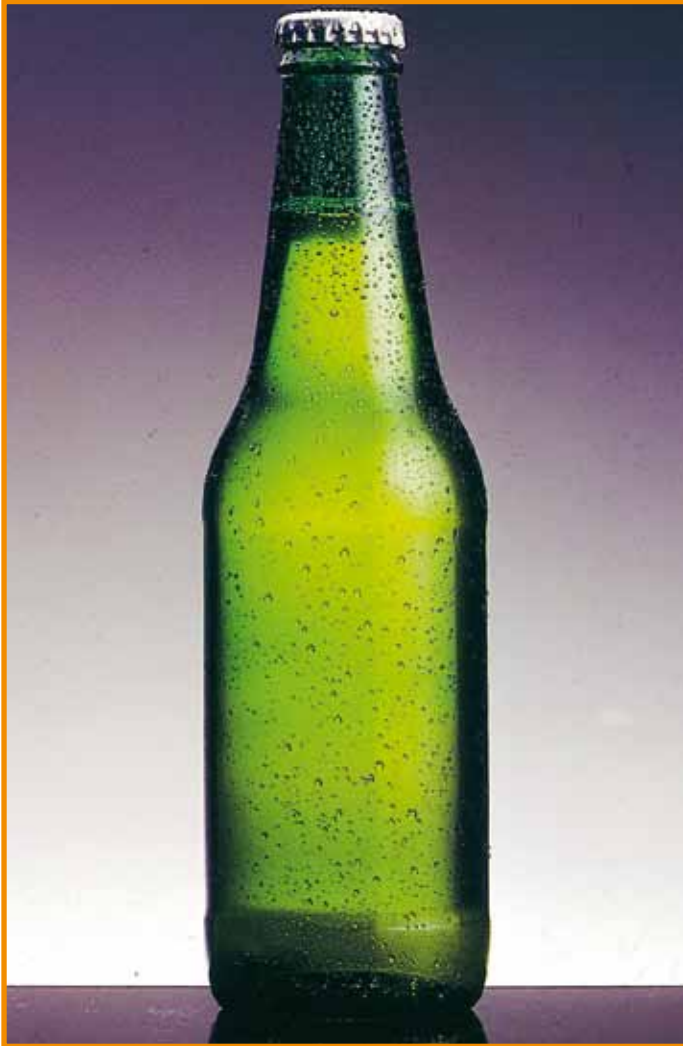
Art. 01627 1 piece size 3x6 cm

Art. 01628 1 piece size 6x9 cm

Art. 01629 1 piece size 9x14 cm



DEW EFFECT



In summer, an ice cold drink dripping with dew is the best you could wish for, but unfortunately, under the headlights of a photo studio, the effect of water droplets disappears immediately due to the heat. Dew Effect is a spray without propellant gas, which creates dew on any non-absorbent surface and keeps this effect for a long time.

Packages

Art. 01617 120 ml can



DUST EFFECT



Creating dust on objects takes a long time and ... the photographer does not have time to waste! Dust Effect plays faithfully the true dust and it's easy to spread on objects through the sieve provided. In macro shooting, Dust Effect can simulate the sand.

Packages

Art. 01619 250 ml can



DROP EFFECT

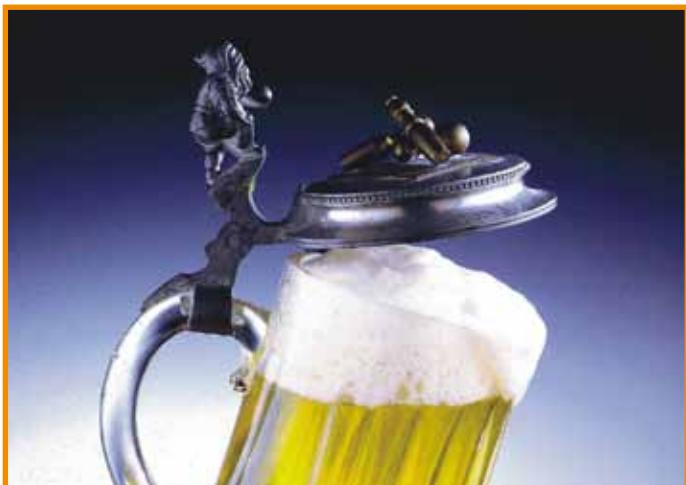


So many photographers would have wanted to apply fine drops of water to fruits, vegetables, bottles etc. The problem is that anything you can do with water dries rapidly under studio lighting! But no worries any longer. Condor drops never dry or evaporate, easily applicable with applicator wand supplied.

Packages

Art. 01604 50 ml can

FROTH EFFECT EFFETTO SCHIUMA

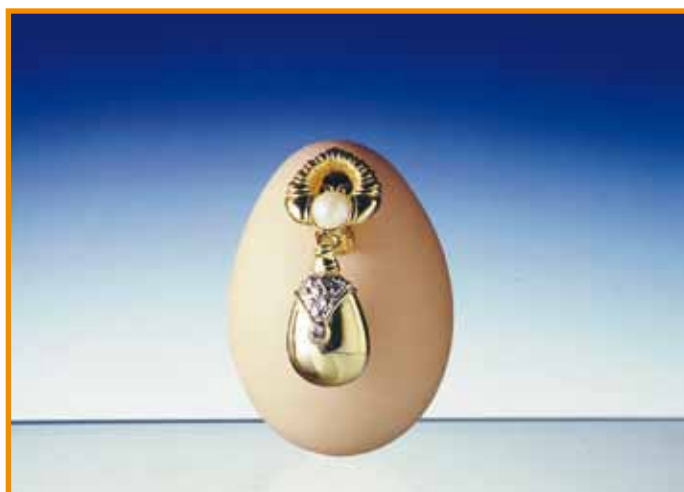


Creates the everlasting freshly foam is possible with Froth Effect. Mix components "A" and "B" for a few seconds to produce a read-to-use foam which can be poured onto every products you like. Four applications for box.

Packages

Art. 01618 4 doses of 2x30 ml

STICKYWAX CERA ADESIVA



A pliable wax adhesive. Indispensable in any "fix-it" job.

Confezioni / Packages

Art. 01624 24 wax cubes in blister



SNOW EFFECT EFFETTO NEVE



Create a winter wonderland scene which won't melt under lights. By dispensing gently through the sieve provided create the illusion of falling snow.

Packages

Art. 01622 1000 ml

Art. 01623 5000 ml

COBWEB EFFECT EFFETTO RAGNATELA



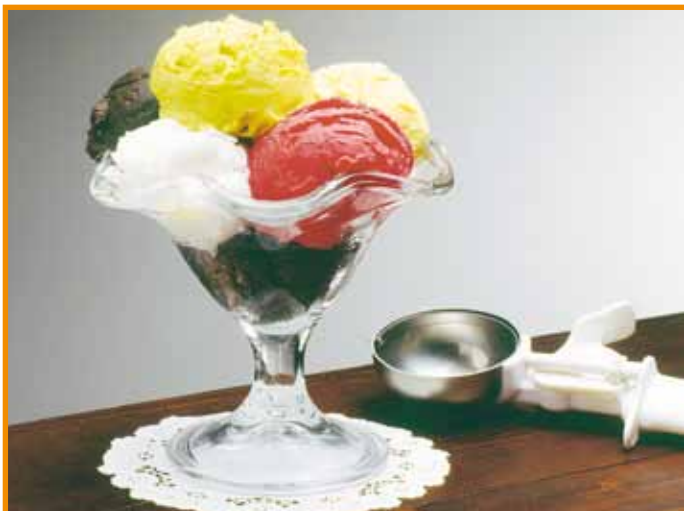
Who can't remember at least one film in which dusty cobwebs conveyed gloomier, more dramatic feeling to scenes of mystery and horror? Cobweb Effect lets you spray these dusty webs onto virtually any surface: walls, windows, bottles, books and almost anything else. Picture results so realistic that you can't distinguish from the real thing! Is suggested to use Eco Antispot (item 00300) before using Cobweb Effect.

Packages

Art. 01605 300 ml aerosol can



ICE CREAM EFFECT EFFETTO GELATO



In the photography of "food" playing ice cream is always very difficult because these will melt too quickly; Ice Cream Effect faithfully reproduces your ice cream, is convenient to use, it is harmless and lasts forever! Ice Effect Cream is produced in five colors: Cream, Vanilla, Chocolate, Strawberry and Pistachio (which tastes most common). The colors can be mixed with each other (eg: cream + chocolate = hazelnut)

Confezioni / Packages

Art. 01609 Ice Cream Effect Kit: 5 different colours 250 ml can

Art. 01610 Ice Cream Effect Cream 250 ml can

Art. 01611 Ice Cream Effect Vanilla 250 ml can

Art. 01612 Ice Cream Effect Chocolate 250 ml can

Art. 01613 Ice Cream Effect Pistachio 250 ml can

Art. 01614 Ice Cream Effect Strawberry 250 ml can

ICE FLOWER EFFECT EFFETTO FIORI DI GHIACCIO



Sprayed on the glass and a few minutes later appears as if by magic, beautiful ice flowers.

Confezioni / Packages

Art. 01635 120 ml can



darkroom products

Anche al buio, siamo insieme a voi, a tenervi compagnia e a supportare il vostro lavoro in camera oscura.

La linea di accessori proposta da Condor Foto vi consentirà di operare con la massima flessibilità nella fase di trattamento delle vostre pellicole e nella stampa delle vostre fotografie.

La camera oscura è viva e sempre attuale !

Even in the dark we are with you to keep your company and support your work in the darkroom. The range of products proposed by Condor Foto will let you operate with the biggest flexibility in the treatment phase of your rolls and in the print of your photos. Darkrooms are alive and always up-to-date!

TANK COMPACT



Are perfectly light and water light. Optimal film processing is ensured by fast filling and dumping and a reels tilting and twisting system with automatic axial skip motion. Tank A-P Compact contains two 35 mm reels and can accept up to three 110 reels.

*Packages
Art. 03700 TANK COMPACT AP*

MINI TANK COMPACT



It's a developer-tight light and water. The rapidity of filling and emptying and the stirring system for reversal and rotation of the spiral allows optimum development of the film. Mini Tank A-P Compact contains a spiral 35 mm.

*Packages
Art. 03701 MINI TANK COMPACT AP*

REEL

*Translucent reel for reversal slide processing allows an easy insertion of the film, even if wet.
Reel for film 135-126-127 / 220*



*Packages
Art. 03800 REEL 135*

SAFELIGHT

*Can be installed on the wall or placed on a table. 10V lamp.
Working distance recommended min. 1 m.
SAFELIGHT RED: for high sensitivity, densitised, orthochromatic emulsions and multi-grade paper.
SAFELIGHT ORANGE: for medium sensitivity b/w paper and for reproductions.*

*SAFELIGHT GREEN: for panchromatic emulsions and b/w negatives.
SAFELIGHT YELLOW: for low sensitivity silver bromide paper.*



*Packages
Art. 04301 SAFELIGHT RED
Art. 04302 SAFELIGHT ORANGE
Art. 04306 SAFELIGHT GREEN
Art. 04300 SAFELIGHT YELLOW*

*Art. 04304 RED CUP
Art. 04305 ORANGE CUP
Art. 04307 GREEN CUP
Art. 04303 YELLOW CUP*

CONDOR TIMER E

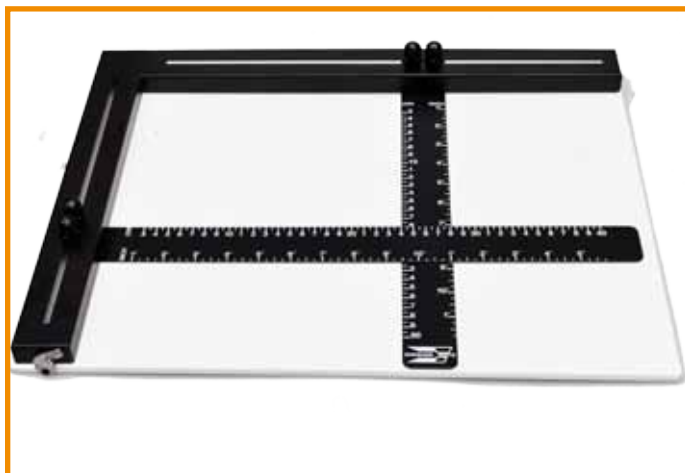


Electronic timer for printing black/white with exposure times from 0.5 to 119 seconds. Magnifier connected directly, with a maximum power of 1000 Watt lamp. Accuracy of timing $\pm 2\%$ on all scales. Repeatability: immediate. Protection: in fuse. Body: ABS black shockproof.

Packages

Art. 04501/1 CONDOR TIMER E (with VDE plug & socket)

CONDOR ENLARGING EASEL 30x40cm



Robust enlarging 30x40 cm with two blades, built entirely in metal. The blades are split in centimeter. Enlarging 30x40 is provided with an automatic lock for the paper.

Packages

Art. 04002 ENLARGING EASEL 30x40

PRINT TONGS

Resistant to photographic chemical solutions. Special design for resting on the edge of developing tray. Comes with fastening clips and hook hangers.



Can also be used as pegs for hanging negatives. Total length: 18 cms. Blister pack with 2 units.

Packages

Art. 04401 PRINT TONGS AP

STIRRING PADDLE

Plastic stirring paddles resistant to photographic chemical solutions.



Paddle ends with holes to facilitate stirring of liquids and quick dissolving of solids. Total length: 26 cms.

Packages

Art. 04402 STIRRING PADDLE AP

STIRRING PADDLE THERMOMETER

The same as the reference of item 04402. With thermometer scale 0 to 50°C. Blister pack with 1 unit.



Packages

Art. 04403 STIRRING PADDLE THERMOMETER AP

FILM CLIPS

To dry and tense the negative films. Set composed of 2 clips, one of them with weight.



Packages
Art. 04405 FILM CLIPS AP

FILM SQUEEGEE



With 3 overlapping soft rubber blades for draining off liquids in film.

Packages
Art. 04404 FILM SQUEEGEE AP

GLASS THERMOMETER

Glass thermometer
0-40°C.



Packages
Art. 04428 GLASS THERMOMETER AP

DEVELOPING TRAY

Manufactured in high-grade plastic resistant to photographic chemical solutions.



Packages
Art. 04450/w DEVELOPING TRAY AP 20x25 cm
Art. 04451/w DEVELOPING TRAY AP 24x30 cm
Art. 04452/w DEVELOPING TRAY AP 30x40 cm

AIR REDUCTION BOTTLES

Opaque plastic accordion bottles to preserving chemical solutions sensitive to light and air.



Packages
Art. 04453 1 litre
Art. 04454 2 litres

CYLINDERS

Made in transparent plastic glass, with measurements in cc. and ounces. Heat-resistant: up to 80°C:

Packages
Art. 04423 CYLINDER AP 50 cc
Art. 04424 CYLINDER AP 100 cc
Art. 04425 CYLINDER AP 300 cc
Art. 04426 CYLINDER AP 650 cc
Art. 04427 CYLINDER AP 1000 cc



VESSEL

Made in transparent plastic glass, with measurements in cc. and ounces. Heat-resistant: up to 80°C.

Packages

Art. 04429 VESSEL AP 500 cc



FILM CARTRIDGES OPENER

Very useful to open riveted cartridges.



Packages

Art. 04413/1 FILM CARTRIDGES OPENER AP

FILM PICKER

Film remover to facilitate the retrieval of the film and within the cartridge. A must in the lab or darkroom.



Packages

Art. 04441 FILM PICKER AP

ROUND SLIDE TRAY

Round tray for max. 80 slides 24x36, with a protective transparent cover.



Packages

Art. 04414 ROUND SLIDE TRAY AP

LUPE 8X

Desk loupe a 8X magnification. Display case with 10 units individually packed.



Packages

Art. 04408 LUPE 8X AP (box 10 pieces)

POCKET SLIDE VIEWER

For 5x5 slide viewing and negative strips of 135. 2x loupe, Ø20mm. Display case with 12 viewers.



Packages

Art. 04409 POCKET SLIDE VIEWER (box of 12 pieces)

SLIDE VIEWER 2X

5x5 slide viewer, 2X loupe, 60x50 mm. optics. Works with 2 batteries 1,5V not included.

Packages
Art. 04439
SLIDE VIEWER 2X
AP



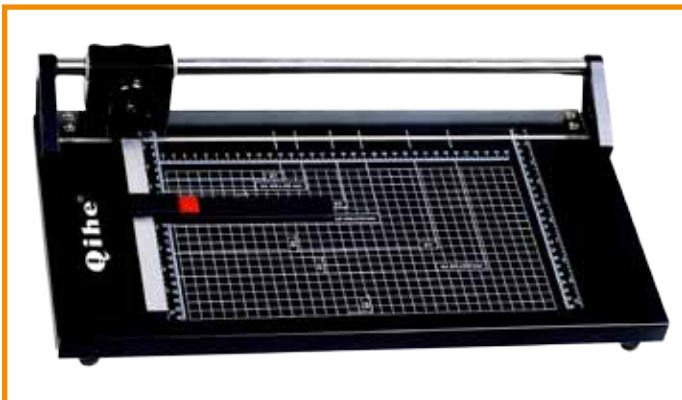
SLIDE VIEWER AUTO

Slide viewer to use with batteries (not included) or to be connected to the mains. Automatic slide change. Stockage up to 60 slide frames. Magnifier size 75x75mm, magnification 2x, lamp 15W E14, cable length 1,7m.



Packages
Art. 04442 SLIDE VIEWER AUTO AP

ROLLER CUTTER



Professional roller trimmer

Packages
Art. 04604 ROLLER CUTTER T14 (35cm)
Art. 04605 ROLLER CUTTER T24 (61cm)

HAND CUTTER



Hand cutter for identity cards. Cut size 35x45mm.

Packages
Art. 04431 HAND CUTTER

professional studio products

Le attrezzature per lo studio Condor Foto: una fonte inesauribile di soluzioni decisamente...lumino-
nose!

Siamo in grado di darvi le migliori luci, di sorreggere ogni vostro fondale, di fornirvi ogni indispensabile accessorio. Una sala posa corredata con i prodotti Condor Foto vi consentirà di avere sempre tutto sotto controllo...anche nelle situazioni più incontrollabili!

The Condor Foto equipments for the studio: a never ending source of bright ideas! We can give you the best lights, supports and any kind of backgrounds. A set fitted up with all Condor Foto products will enable you to keep everything under control...even in the most uncontrollable situations!

DIGITAL FLASH-BALL art. 04201



Omnidirectional photo slave with pc-sync connector, can be connected to all flashguns by means of their sync cable. Flash-Ball has no polarity problems, works without batteries, is practically unbreakable, has a range of 70 meters

FLASH-BALL US art. 04227



Omnidirectional photo slave with US household plug for US flash equipment having such a connector. Flash-Ball with US socket has no polarity problems, works without batteries, is practically unbreakable, has a range of 70 meters.

FLASH-BALL TWO art. 04228



Omnidirectional photo slave with two pc-sync connectors, can be connected to all flashguns by means of their sync cable. Flash-Ball Two has no polarity problems, work without batteries, is practically unbreakable, has a range of 70 meters.

HOOK & LOOP ADAPTER art. 04229



An attachment that can be screwed to the Flash-Ball versions 04201 and 04228 for direct connection to flashguns without a bracket.

SUPER TRANSMITTER art. 04208



Four channels radio control Transmitter to activate flash units, motorized cameras, video cameras, etc. Can be activated individually or simultaneously.

Features: Frequency: 325 MHz. Modulation: digitally coded AM. 9V power supply battery (not included). Built-in flash socket. Check button. Shoe for attachment to photographic camera. Connecting cable for pc-sync attachment

to photographic camera. Separable antenna. Range: up to 100 m

RADIO LIGHT UNIT RECEIVER art. 04202



Receiver for Super Transmitter.

Features: Power supply: 6x1,5V batteries. Delay time 1/2000sec for flash equipment; 1/500 for motorized photographic camera. Built-in flash socket. Built-in AUX socket (for connecting a motorized photographic camera or a videocamera etc.). Working range: up to 100 m

LONG STRAP art. 04205



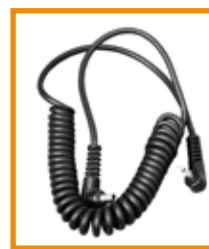
A resistant neck strap with spring snap for carrying Super Transmitter.

TX SHOE art. 04236



Replacement shoe.

CABLE art. 04373



Replacement cable with 2,5mm jack plug for Super Transmitter.

GIGTUBE DSLR WIRELESS II VIEWFINDER art. 04174



Gigtube Wireless II is a live-view wireless display and remote with infinite photographic possibilities. Features: mini-cam technology uses a built-in camera on the transmitter. It makes GWII usable on most DSLR whether they have live-view or not. GWII adds video start and stop control which allows you to record video in live-view mode wirelessly. (Only used for select Canon models cameras). One GWII receiver can monitor 4 cameras at once. Has 5 drive modes: single shot, continuous, self-timer, bulb and video record. GWII receiver has internal memory, storing up to 100 shots. Pictures can be viewed and deleted.

Screen: 3,5" TFT, 230000 pixel, 16M
Frequency: 2,4G - Transmitter distance: 100m - Power: rechargeable Lithium battery NP-60, 1200mAh - Power life: TX 6h RX 6h - Sizes: TX 87x50x41mm RX 127x79x30mm.

GIGTUBE DSLR DIGITAL VIEWFINDER art. 04173



Gigtube is an innovative remote viewfinder with a swivelling 2,5" LCD screen, bringing live view to new angles. It can help you in many photographic situations, such as self portraits, overed and ground level shooting. Working with cameras with video output, the screen streams a lag-free live view and displays images immediately after shooting.

Features:

Screen: 2,5" 230000 pixel, 16M colour LCD - Rotates angle: counterclockwise 180°, clockwise 90° - Cable: 2m extension cable - Power: rechargeable LIP battery, 1000mAh - Battery life: 3 hours - Weight: 110g - Size: 83x66x45mm

GIGTUBE CABLES

Cables for Gigtube DSLR Digital Viewfinder and for Gigtube DSLR Wireless II Viewfinder.

CABLE GWII C1-1 art. 04173/1



Cable for:
Canon EOS 1000D (XS), 450D (XSi), 400D (XTi), 350D (XT), 300D

CABLE GWII C1-2 art. 04173/2



Cable for:
Canon EOS 50D, 40D, 30D, 20D, 1D (S), MARK III, 1D (S) MARK II (N).

CABLE GWII C2 art. 04173/3



Cable for:
Canon EOS 5D MARK II

CABLE GWII N1 art. 04173/4



Cable for:
Nikon D700, D300, D200, D2X (S), D2H (S)

CABLE GWII N2-1 art. 04173/5



Cable for:
Nikon D300S, D3, D3X, D3S

CABLE GWII L3-1 art. 04173/6



Cable for:
Olympus E-P3, E-P2, E-P1, E-420, E-450, E-520, E-620, E-30, EM5, E3

CABLE GWII N2-2 art. 04173/7



Cable for:
Nikon D90, D3100, D7000

CABLE GWII C3-1 art. 04173/8



Cable for:
Canon EOS 650D, 600D, 550D, 500D, 60D

CABLE GWII C3-2 art. 04173/9



Cable for:
Canon EOS 1DX, 7D, 1D Mark IV, 5D Mark III

FLASH MULTIPLIER art. 04240



Flash Multiplier allows programming flashes at variable time intervals and can be used with any type of electronic flash equipment; it is particularly useful in still-life photography and generally in all cases of multiple exposures.

DIGITAL CAMERA ADD-ON FLASH KIT art. 04374



Bracket has a special slave with a switch for normal or pre-lamp sync. Flash has a GN 18/m, so you can light your object much further away.

KIT TRIGMASTER II 2.4 G

KIT TRIGMASTER II FOR CANON
art. 04140

KIT TRIGMASTER II FOR NIKON
art. 04141



Kit Trigemaster II makes controlling your Strobe and Speedlight Flash wirelessly easier than ever with a flash sync speed of 1/250s, a transmitting distance of 100 meters, and 16 different channels, you'll be able to work efficiently in a variety of conditions. In addition, Kit Trigemaster II also acts as a remote shutter trigger for your camera. Kit Trigemaster II is compatible with all 2.4 G Triggers

Features:

Frequency: 2,4 G FSK (radio signal)
Transmitting distance: 100m - Channel: 16 - Sync speed: 1/250 sec. - Size TX: 76x33x27mm - Size RX: 71x38x32mm - Power TX: 2x1,5V AAA - Power RX: 2x1,5V AAA

TRIGMASTER II RECEIVER

TRIGMASTER II RX FOR CANON
art. 04142

TRIGMASTER II RX FOR NIKON
art. 04143



Additional receiver for Kit Trigemaster II

TRIGMASTER KIT II CABLES

Additional cables for Kit Trigemaster II to control cameras.

CABLE MX3C art.04170/1



Cable for:
Canon EOS 7D, 50D, 40D, 30D, 5D, 20D, 10D, 5D MARK III, 5D MARK II, 1DX, 1DC, 1D MARK IV, 1D(S) MARK III, 1D (S) MARK II (N)

CABLE MX1N art.04170/2



Cable for:
Nikon D 800 E, D 800, D 700, D 300 S, D 300, D 200, D 4, D 3X, D 3, 2Xs, D2Hs, D2H, D2X, D1H, D1X, D1, N90s, F5, F6, F100, F90, F90X. Fuji Film S5PRO, S3PRO. Kodak DCS 14n.

CABLE MX3N art.04170/3



Cable for:
Nikon D7000, D5100, D5000, D3200, D3100, D90

CABLE MX1S art.04170/4



Cable for:
Sony α55, α33, α500, α550, α850, α900, α350, α300, α200, α700, α100, α560, α580, α290 α390, α450, α77, α65, α35

CABLE MX3L art.04170/5



Cable for:
Olympus E600, EP1, EP2, E30, E620, E450, E520, E510, E420, E410, EM5, EP3, SP 570UZ, SP 560UZ, SP 550UZ, SP 510UZ.

CABLE MX1C art.04170/6



Cable for:
Canon EOS 1100D (T3i), 600D (T2i), 60D, 650 D, 550D (Digital Rebel T2i), 500D (Digital Rebel T1i), 1000D (Digital Rebel XS), 450D (Digital Rebel XSi).

CABLE MX2N art.04170/7



Cable for:
Nikon D80, D70s.

KIT VILTROX TTL

KIT TRIGGER VILTROX TTL
FOR NIKON art. 04632

KIT TRIGGER VILTROX TTL
FOR CANON art. 04630



Kit Trigger Viltrox TTL for Nikon is compatible with Nikon i-TTL flash perfectly. Wireless flash trigger designed for Nikon users to a high performance 2.4GHz wireless flash device, can flash in 360 degree, realizes different shooting effect.

Features:

System type FSK 2.4 GHz wireless remote control system. - Distance: 100m - Flash mode: i-TTL, M, Multi flash. - Sync mode: 1st curtain, 2nd curtain, Hi-speed sync. - Groups control: 3 groups A/B/C. - Max sync speed: 1/8000s - Channels: 2 - Battery: AA battery x 2 - Stand-by time: 60h - Dimension: 70x60x45mm - Weight: 140g (two)

Art. 04632
KIT TRIGGER VILTROX TTL
NIKON

Art. 04630
KIT TRIGGER VILTROX TTL
CANON

SYNC CABLE PC 3,5mm VILTROX art. 04634



Sync cable for Viltrox radio slave
(spare part)

RECEIVER VILTROX TTL

RECEIVER VILTROX TTL
FOR NIKON art. 04633

RECEIVER VILTROX TTL
FOR CANON art. 04631



Art. 04633
RECEIVER VILTROX TTL
NIKON

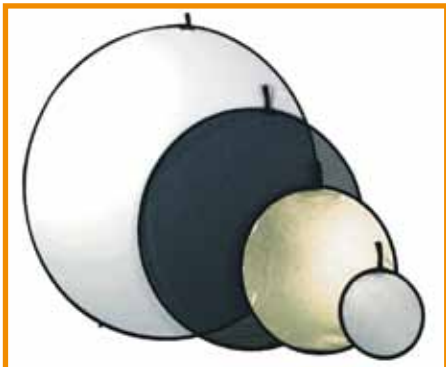
Art. 04631
RECEIVER VILTROX TTL
CANON

VR-1 REMOTE CONTROLLER IR FOR CANON art. 04167



Aputure VR-1 controller makes video shooting easier than ever. It's highly sensitive, has a long distance range, and operates easily. It can be mounted on most rigs, and can also be held in your hand, especially useful for self-shooting.

DISCOLITE & QUADRALITE



They are circular and rectangular reflectors of sunlight or artificial light, foldable in three parts in order to be easily stored in small spaces. Discolite and Quadralite "Silver" intensify the light. Discolite and Quadralite "gold" reflect a warm, golden light. Discolite and Quadralite "network" are used to filter the light.



SILVER/WHITE

Discolite Ø31 cm art. 01000
 Discolite Ø62 cm art. 01001
 Discolite Ø93 cm art. 01002
 Discolite Ø124 cm art. 01003
 Quadralite 30x50 cm art. 01050
 Quadralite 50x70 cm art. 01051
 Quadralite 70x100 cm art. 01052

GOLD/WHITE

Discolite Ø31 cm art. 01010
 Discolite Ø62 cm art. 01011
 Discolite Ø93 cm art. 01012
 Discolite Ø124 cm art. 01013
 Quadralite 30x50 cm art. 01060
 Quadralite 50x70 cm art. 01061
 Quadralite 70x100 cm art. 01062

SILVER/GOLD

Discolite Ø31 cm art. 01020
 Discolite Ø62 cm art. 01021
 Discolite Ø93 cm art. 01022
 Discolite Ø124 cm art. 01023
 Quadralite 30x50 cm art. 01070
 Quadralite 50x70 cm art. 01071
 Quadralite 70x100 cm art. 01072

BLACK NET

Discolite Ø31 cm art. 01030
 Discolite Ø62 cm art. 01031
 Discolite Ø93 cm art. 01032
 Discolite Ø124 cm art. 01033
 Quadralite 30x50 cm art. 01080
 Quadralite 50x70 cm art. 01081
 Quadralite 70x100 cm art. 01082

DISCOLITE 5 IN 1 art. 04109



Foldable Discolite 5 in 1 Ø107cm. Colours: Silver, Gold, White, Black and Translucent.

FLEX PANEL



Flex panels 150x210cm foldable like a Discolite. Colours: white / silver and Gold / Silver
 Art. 04246 FLEX PANEL S/W
 Art. 04248 FLEX PANEL G/W



DISCO HOLDER art. 04620

It is a two sections telescopic arm 98-130cm to hold different sizes of "Discolite" and "Quadralite", equipped with a swivel clamp for mounting on a stand.

DISCO HOLDER KIT art. 04620/1

One "Disco Holder" item 04620, one stand 120-360cm with carry bag.

WIND TUNNEL art. 04376

It's a real wind machine at a great price! The speed is adjustable and moves 2880 m³ per hour at 1400 rpm.

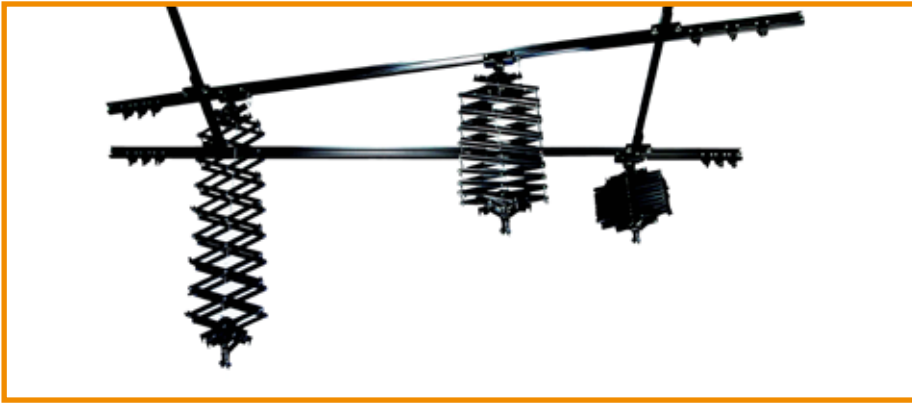
WIND SNOOT art. 04311

Additional cylinder to apply to Wind Tunnel to direct air emitted. It significantly increases the flow.

DOLLY FOR WIND TUNNEL art. 04310

Dolly with 5 lockable wheels for Wind Tunnel

CEILING TRACK SYSTEM art. 04380



Four ceiling track system 3x3m with three pantographs 43-200cm

LIFT LIFTER art. 04382



Pantograph 43-200cm equipped with single pulley, 3 wire pulley, spigot and safety belt.

SINGLE TRACK



Single track

Art. 04380/2 3 metres
Art. 04380/13 4 metres

DOUBLE TRACK



Double track

Art. 04380/1 3 metres
Art. 04380/14 4 metres

WIRE PULLEY art. 04380/6

Wire pulley



WIRE CLIPS art. 04380/7

Wire clips



HEAD (SPIGOT) art. 04380/8

Spigot 5/8".



SAFETY BELT art. 04380/9

Safety belt



END TIP DOUBLE art. 04380/10

End tip for double track (couple).



END TIP SINGLE art. 04380/11

End tip for single track (couple).



CLAMPING PLATE art. 04380/3

Clamping plate for track.



WALL MOUNT art. 04380/12

Wall mount for Lift-Lifter



DOUBLE PULLEY art. 04380/4



Double pulley

SINGLE PULLEY art. 04380/5



Single pulley

MONO POLE art. 04241



Extensible bar 4m Ø45mm. It has a switch level and at the end it has two rubber cuppings to obtain a perfect adhesion. It is possible to place it on the wall or from ceiling to floor. It's used to hold up spots, flashes, backgrounds or any kind of photographic equipments.

BACKDROP ROLLER art. 04242



One set of roller with plastic chain.

HOOKS 1 art. 04243/1



One pair of hooks to be installed with Superb Clamp to support Backdrop Roller.

HOOKS 3 art. 04243/3



One pair 3 Backdrop Roller hooks.

HOOKS 6 art. 04243/6



One pair 6 Backdrop Roller hooks.

METAL CHAIN art. 04247



Metal chain for Backdrop Roller.

ALU POLE art. 04244



Crossbar in 2 sec. 150-300cm Ø50mm for Backdrop Roller

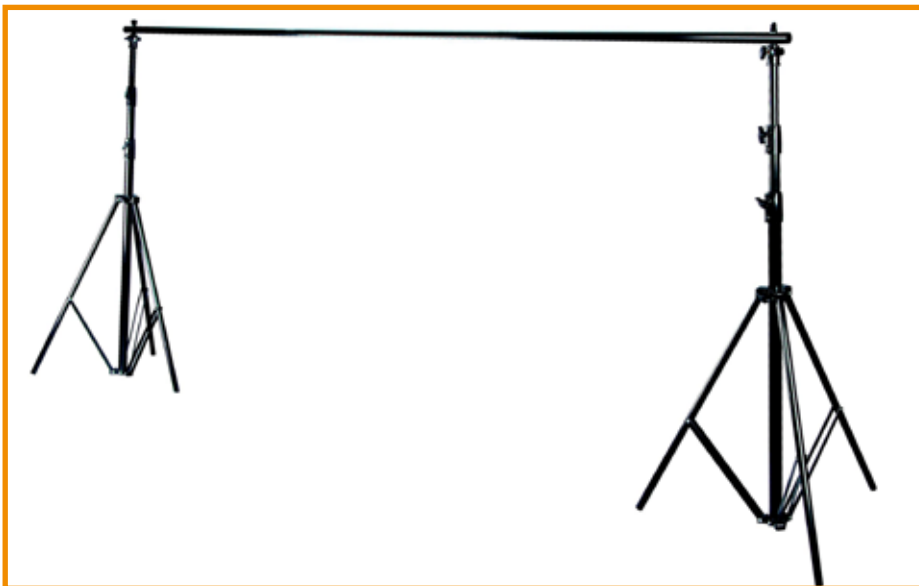
ALU POLE art. 04245



Crossbar in 2 sec. 180-360cm Ø50mm for Backdrop Roller



BACKGROUND STAND art. 04601



Support for backgrounds that includes 2 stands 113-290cm, one crossbar 4 sec. 365cm and carrybag.

STUD 5/8" art. 04299/1



Stud with double female thread 1/4" and 3/8"

SPIGOT 5/8" art. 04299/2



Spigot with 3/8" and 1/4" screw.

STUD 3/8" art. 04389



Stud with female thread 1/4"

SUPERB CLAMP art. 04287



Universal clamp with adjustable jaw. With spigot.

DOUBLE SUPERB CLAMP art. 04288



Double universal clamp, with adjustable jaw, assembled at right angle. Comes with 2 spigots.

NYLON CLIP art. 04285



Special clips for crossbar Ø3,5 cm.

PINZA art. 04286



Strong clamp with max opening 3,5cm with 5/8" stud.

METAL CLIP art. 04384



Mini clip with 1/4" screw

HEAVY DUTY GRIP art. 04385

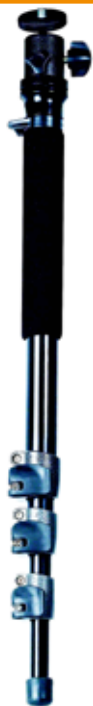


Strong clamp with 5/8" stud and 5/8" pitch to connect the grip on stand

DOUBLE MINI CLIP art. 04313



Dual gripper that is useful to be engaged in any dish, jellies, flags, etc..

MONOPOD art. 04602

Monopod with small ball head. Extension: 60-173cm.

CAMERA TRIPOD MINI art. 04357

Professional alu camera tripod, comes with small ball head. Tubing Ø23, 19, 16mm. Legs spread 3 positions for low angle. Extension 38-132cm. Weight 1,6 Kg.

CAMERA TRIPOD MEDI art. 04358

Professional alu camera tripod, comes with small ball head. Tubing Ø27, 22, 19mm. Legs spread 3 positions for low angle. Extension 44-150cm. Weight 2,2 Kg.

JOYSTICK HEAD art. 04603

Joystick head with quick release mount. H. 21cm - Weight: 750g

LARGE BALL HEAD art. 04378

Large ball head with quick release mount for 6x9 camera. Weight 630g.

THREE WAY PAN TILT HEAD art. 04364

Three way pan/tilt head with quick release mount for any camera. Weight 1,0 Kg

QUICK RELEASE MOUNT art. 04363

Quick release mount.

QUICK RELEASE MOUNT MINI art. 04363/1

Quick release mount.

QUICK RELEASE MOUNT FOR JOYSTICK art. 04603/1

Quick release mount for Joystick head.

PRO MAXI BOOM STAND
art. 04353



Stand 2 sec. alu silver 114-200cm
Ø35mm with wheels, suitable for Maxi
Boom.

PRO STAND art. 04619



Stand 4 sec. alu black 95-380cm
Ø35mm.

STAND BOOM art. 04276



Stand 130-380cm. Thanks a special
pivoting clamp the stand changing in
boom. The extension of the "boom" is
118-210cm. Stand Boom is equipped
with a counterweight bag to be filled
with sand.

PRO STAND art. 04350



Air cushioned Stand 4 sec. alu black
106-353cm Ø35mm.

VIDEO LIGHTING STAND
art. 04138



Stand 4 sec. alu silver 190-590cm
with lockable wheels.
Weight: 17,8 Kg

C LIGHT STAND art. 04137



C stand 3 sec alu black 155-325cm.
Weight 6,7 Kg

ALU STAND art. 04360

Air cushioned Stand 4 sec. alu black 73-234cm Ø26mm.

ALU STAND art. 04362

Air cushioned Stand 5 sec. alu black 75-285cm Ø26mm.

BACKLITE STAND art. 04386

Stand 2 sec. alu black 50-84cm Ø22mm.

ALU STAND art. 04618

Stand 3 sec. alu black 100-280cm Ø34mm.

KIT 3 WHEELS FOR PRO STAND art. 04381

Kit 3 wheels for item 04350, 04276, 04618.

UMBRELLA BRACKET art. 04383

To mount umbrella from stand and flash or spot light. Two spigots incl.

ALU STAND JUNIOR art. 04361

*Stand 4 sections aluminium black 64-218cm Ø20mm.
Weight 900g - Load 4,0 Kg.*

BIRDS EYE POLE
art. 04314



Telescopic pole with ratcheted tilt-head, quick camera mount on top, equipped with remote electronic shutter release. Designed for new DSLR cameras which have flip-able LCD panel. User can raise camera up to 10ft above ground, and get Byrds Eye view and get the aerial shot without riding on helicopter.



Gigtube DSLR Digital Viewfinder art. 04173 mounted on Birds Eye Pole art. 04314

STAND BOOM art. 04276



Stand 130-380cm. Thanks a special pivoting clamp the stand changing in boom. The extension of the "boom" is 118-210cm. Stand Boom is equipped with a counterweight bag to be filled with sand.

MEDI BOOM art. 04354



Boom 100-190cm Ø30mm with 3,0 Kg counter weight.

MAXI BOOM art. 04355



Boom 124-248cm Ø30mm with 6,0 Kg counter weight.

STILL-LIFE TABLE
art. 04608



Still-life table 60x130cm H. 60cm

STILL-LIFE TABLE BIG
art. 04609



Still-life table 100x240cm H. 83cm

UMBRELLA BRACKET
art. 04383



To mount umbrella from stand and flash or spot light. Two spigots incl.

UMBRELLA



UMBRELLA Ø 60 cm

*Umbrella g/b Ø60cm
black outside/gold inside
art. 04252*

UMBRELLA Ø 90 cm

*Umbrella b/w Ø90cm
black outside/white inside
art. 04260*

*Umbrella s/b Ø90cm
black outside/silver inside
art. 04261*

*Umbrella g/b Ø90cm
black outside/gold inside
art. 04262*

*Umbrella T Ø90cm
translucent
art. 04263*

UMBRELLA Ø 106 cm

*Umbrella b/w Ø106cm
black outside/white inside
art. 04264*

*Umbrella s/b Ø106cm
black outside/silver inside
art. 04265*

*Umbrella g/b Ø106cm
black outside/gold inside
art. 04266*

*Umbrella T Ø106cm
translucent
art. 04267*

MAXIUMBRELLA Ø 190cm



*Umbrella s/b Ø190cm
black outside/silver inside
art. 04268*

METAL SHOEMOUNT FLASH
UMBRELLA art. 04387



Accessory to install flash lights umbrellas or without umbrella stand lighter. It has a multi-position joint.

METAL SHOEMOUNT FLASH
UMB. + EXTRA art. 04390



Special tilt-head accessory to assemble umbrellas on flashes without umbrella mount. It has an extra 1/4" screw to mount flashes.

STUDIO PACKSHOT
art. 04397



Studio Packshot is a shooting booth. Window mask lets you create a fanciful light effect is included. Size 70x70x57cm.

CUBE STUDIO PACKSHOT



The Cube Studio Packshot is a fold tent available in three different sizes. Is designed for small objects to work on studio or on location. It allows to control the lighting of objects, minimizing shadows. Easy to fold. The Cube Studio Packshot comes with a blue background. On request, front face can be closed with a translucent panel to obtain a complete diffusion.

STUDIO LIGHTING BOX
art. 04327



This deluxe portable photo studio box, equipped with sophisticated build-in lighting system, is specially designed and engineered for users to take high quality product photos quickly and easily. Its portable all inclusive design makes it effortless to take on-site photos or bring it everywhere. By simply flipping few switches, an ideal lighting environment for the product photography session can be created. Start taking professional high quality product photos within minutes. Power 6x16W - Voltage 220-240V 50 Hz - Color temperature: 5500°K - Size 60x60x60cm. Accessories included: background clothes blue, white and grey.

MAGIC SILO art. 04365



A diffusing tent that can expand into a cylindrical form Ø43cm and high 71cm. There is a round porthole on the side to allow spot light.

CUBE STUDIO PACKSHOT MINI
size 40x40cm art. 04107/1

CUBE STUDIO PACKSHOT MEDI
size 90x90cm art. 04107

CUBE STUDIO PACKSHOT MAXI
size 120x120cm art. 04107/2



KIT FLASH GUN K5 art. 04321



Accessories for portable flashes. Kit contains: 1 bag, 1 honeycomb grid, 1 leaf barn door and 1 softbox complete of 6 coloured filters.

To mount kit on flash is necessary adapter "FLEX MOUNT"

FLEX MOUNT



Adapters to mount accessories: KIT FLASH GUN K5 and K7 on flashes.

KIT HONEYCOMB art. 04312



Kit Honeycomb H-245 are to add special effects to the portable flash. It has 3 different kind of grids, 30, 40 and 50 degrees. Each one gives choice of different spot coverage. When using the grid it produces spot light pattern, when flip it up 45 degrees, with the flash head tilt 90 degree up, it acts as bounce board, the metal bounce board has one side in white and one side in silver.

KIT FLASH GUN K7 art. 04320



Accessories for portable flashes. Kit contains: 1 honeycomb grid, 1 conical snoot with 2 honeycomb grids, 1 diffusing ball and 1 softbox complete of 6 coloured filters.

To mount kit on flash is necessary adapter "FLEX MOUNT"

FLEX MOUNT CA-2 art. 04320/1

Adapter for flash Canon 430EX, 430EXII, Metz 36AF4N, 40AF4N, 44AF4C, 48AF-1, 58AF-1, Sony F42AM, F56AM, Sunpak 4000AF, 888F2, Vivitar DF400MZ, DF283, DF383.

Art. 04320/1

FLEX MOUNT CA-6A art. 04320/2

Adapter for flash Nikon SB900, Nissin Di866, Pentax AF540FG2, Sigma EF530DG ST, EF530DG S.

Art. 04320/2

FLEX MOUNT CA-6B art. 04320/3

Adapter for flash Nikon SB900 (w. filter adapter).

Art. 04320/3

FLEX MOUNT CA-7A art. 04320/4

Adapter for flash Canon 580EXII, 580EX, 550EX, Nikon SB24, 25, 26, Nissin Di622, Olympus G40, FL40, FL50, FL50R, Panasonic DMW-FL500, Sigma EF430, EF500DG ST, Sony F32X, HVL-F58AN, Sunpak 444D, Vivitar DF340Z.

Art. 04320/4

FLEX MOUNT CA-1 art. 04320/5

Adapter for flash Nikon SB600, SB800, Olympus FL36, FL36R, Panasonic DMW-FL360.

Art. 04320/5

DIGITAL CAMERA ADD-ON FLASH KIT art. 04374



Bracket has a special slave with a switch for normal or pre-lamp sync. Flash has a GN 18/m, so you can light your object much further away.

MICROSOFTBOX art. 04183

Universal micro softbox 6x9cm, easy to mount on all kind of portable flashes to diffuse light.

MINI SOFTBOX

Universal Mini softboxes, easy to close with Velcro® to mount on all kind of portable flashes.

MINI SOFTBOX 9x9cm
art. 04180

MINI SOFTBOX 29x19cm
art. 04182

MINI SLAVE FLASH MF-45 Art. 04395

Mini slave flash works reliably, stable and safely. It can be used as a master, fill-in, background, side, head or foot light for portrait, still-life and reproduction. Thread it into Lamp Socket when use. Guide number: 28 - Recycle time: 4s - Flash duration: 1/1000s - Control distance: 15m - Colour temperature: 5500°K.

**LAMP SOCKET W.CLIP
art. 04371**

Lamp socket with feeding cable, umbrella mount and clip.



FLASH AMPLE 300W art. 04800



Features:

Output: 300W/s - Flash power variation: full to 1/32 - Flash duration (full power): 1/500 - Modelling lamp life-time LED daylight - Modelling lamp variability: full to 1/32 - Recycling time: full 1,2 sec, half 0,6 sec. - Guide number (m. ISO 100) 22 - Colour temperature: 5.600°K - Fuse: flash 5A - Sync lead voltage: 11V - Built-in slave unit Volume: 15,5x21,5x8,0cm - Weight: 1,4 Kg.

AC POWER SUPPLY UNIT art. 04801



Battery for flash Ample. Recharging time: 4 hours. One full recharge is good for 150 flashes at full power. Size 15x13x34cm - Weight 6,1 Kg.

ADAPTER art. 04802



Ring adapter to mount Ample's accessories.

HONEYCOMB



Adapter for 7" honeycomb grid art. 04803

Honeycomb grid art. 04804

SOFTBOX



SNOOT art. 04806



Snoot reflector to use with item 04802

NARROW ANGLE art. 04347



Concentrated spot tube with 3 coloured filters to use with item 04802.

Softboxes to mount directly on Flash Ample.

Softbox 60x60cm art. 04810

Softbox 90x120cm art. 04811

FLASH 350W Art. 04324

Flash 350W with modern designed of housing, signifies durability and user-friendly and is the economic flash that affordable by most of the photographer. Flash 350W is the multi-functional flash that helps you to create the ideal lighting effect and it is suitable for taking portrait, fashion, wedding or product photos, etc.

Features: Power 350Ws - Guide number: (ISO 100/m) 42
 - Recycling time: 0,8-2 sec - Color temperature: 5500°K
 - Operating voltage: AC 220-240V 50 Hz - Triggering: photo sensor, sync cord, test button. - Weight: 1,3 Kg - Size: 30x20x13cm

KIT FLASH 350W Art. 04325

Kit Flash 350W contains 2 Flash 350W item 04324 + 2 stand 73-240cm., 2 softbox 50x70cm, 1 trigger and 1 carry bag.

STANDARD REFLECTOR art. 04128**BARNDOR. art. 04127****SOFTLIGHT DIFFUSER BALL art. 04126****SOFTBOX 60x60. art. 04133**

Easy to mount, Softbox 60x60cm has internal silver surface and double diffuser.

CONICAL SNOOT art. 04129

Conical snoot with honeycomb grid.

TUBE FLASH art. 04324/1

Tube flash 350W (spare part).

STAR 250W RICHTER
art. 04900



Features:

Output: 244W/s
Guide number 2m 1/60sec 100 ISO 32 1/10
Power selection: 1/1 to 1/16
Voltage stabilization: $\pm 1\%$
Flashlight duration: $t=0,5\text{sec}$: 1/830
Recycling time: full 1,4sec min 0,5sec
Flashlight sequence: 1/1: 80
Flashlight sequence: 1/16: 150
Colour temperature: $5500^{\circ}\text{K} \pm 100$
Shot method: slave, sync attachment, open flash, optional radio control.
Modelling lamp: 250W - E27
Power selection of modelling lamp: proportionally to flash power.
Safety circuit: 5A
Syncro voltage: $6\text{V} \pm 1\text{V}$
Weight: 2,450 Kg
Size: 350x180x130mm
Accessories fastening: quick release $\varnothing 10\text{cm}$

STAR 500W RICHTER
art. 04901



Features:

Output: 488W/s
Guide number 2m 1/60sec 100 ISO 45 1/10
Power selection: 1/1 to 1/16
Voltage stabilization: $\pm 1\%$
Flashlight duration: $t=0,5\text{sec}$: 1/480
Recycling time: full 1,8sec min 0,6sec
Flashlight sequence: 1/1: 70
Flashlight sequence: 1/16: 120
Colour temperature: $5500^{\circ}\text{K} \pm 100$
Shot method: slave, sync attachment, open flash, optional radio control.
Modelling lamp: 250W - E27
Power selection of modelling lamp: proportionally to flash power.
Safety circuit: 5A
Syncro voltage: $6\text{V} \pm 1\text{V}$
Weight: 2,700 Kg
Size: 350x180x130mm
Accessories fastening: quick release $\varnothing 10\text{cm}$

STAR LIGHT 500W RICHTER
art. 04904



Features:

Output: 488W/s
Guide number 2m 1/60sec 100 ISO 45 2/10
Power selection: 1/1 to 1/16
Voltage stabilization: $\pm 0,5\%$
Flashlight duration: $t=0,5\text{sec}$: 1/2000
Recycling time: full 1,2sec min 0,3sec
Flashlight sequence: 1/1: 180
Flashlight sequence: 1/16: 500
Colour temperature: $5500^{\circ}\text{K} \pm 100$
Shot method: slave, sync attachment, open flash, optional radio control.
Modelling lamp: 300W - GY 6,35
Power selection of modelling lamp: proportionally to flash power.
Safety circuit: 5A
Air blast cooling: 80x80x25mm 52m³ 29dbA
Syncro voltage: $6\text{V} \pm 1\text{V}$
Weight: 3,000 Kg
Size: 350x180x130mm
Accessories fastening: quick release $\varnothing 10\text{cm}$

SETLIGHT RC 500W RICHTER
art. 04908



Features:

Output: 488W/s

Guide number 2m 1/60sec 100 ISO 45 1/10

Power selection: 1/1 to 1/32

Flashlight duration: $t=0,5\text{sec}$: 1/1250

Recycling time: full 1,2sec min 0,3sec

Control power of flash: switch with 40 steps.

Indicators for power flash/modelling lamp: two separately lighting LED.

Shot method: slave, sync attachment, open flash, radio control RC included.

Modelling lamp: 650W - GY 6,35

Power selection of modelling lamp: proportionally to flash power or free.

Air blast cooling: 80x80x25mm 52m³ 29dbA

Syncro voltage: 6V \pm 1V

Weight: 3,150 Kg

Size: 367x148x133mm

Accessories fastening: quick release Ø10cm

SET CONTROL RICHTER
art. 04911



Set Control is a control unit of radio control to trigger up to a distance of 70m up to 10 units flash sets light RC Richter (who have a receiver built-in). Each flash drive can be controlled in all its functions: switch and off, the lamp power pilot, flash output, power or the photocell off the flash, management of the beeper. Set Control is useful when you need to manage multiple units are difficult to reach or installed on a gaming-rail. You will control your every point light using Set Control Richter.

SOFT FLOOD REFLECTOR
art. 04704



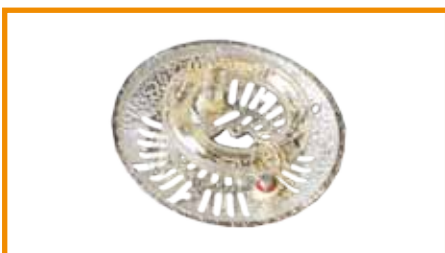
Beauty reflector Ø 56cm with a special white inside finish, yields very soft even light spread for portrait. To create a soft and diffuser light.

MAXI REFLECTOR
RICHTER art. 04946



Maxi reflector Ø30 cm

FLASH TUBE RICHTER



Art. 04820 tube flash for flash Star 250 e Star 500 Richter

Art. 04821 tube flash for flash Star 750 Richer

Art.04822 tube flash for flash Star Light 250 e Star Light 500 Richter

Art. 04823 tube flash for flash Star Light 750 and Star Light 1000 Richter

Art. 04824 tube flash for flash Set Light RC 250 and 500 Richter

Art. 04825 tube flash for flash Set Light 1000 Richter

Art. 04826 tube flash for flash Set Light 1500 and hand Galooma Richter.



POWER PACK GALOOMA 1500W LI art. 04990



The portable power pack for location - Max power output 1500W/s - Infinitely variable output control - Built-in wireless receiver - Professional aluminium profile housing.

Features:

Battery: Lithium

Max. power output: 1470W/s

Aperture: 2m-1/60s-100ASA 64 9/10

Flash duration: t=0,5 1/1400

Flash duration: t=0,1 1/140

Power distribution: 2 outlets symmetrical

Output control 40 step turn potenziometer

Output control range: 1/1 - 1/16

Recycling time: 0,3s - 2,9s

Max no. of flashes at 1/1: ca. 500

Max no. of flashes at 1/16: ca. 10000

Flash release: photocell, sync, test button, radio control

Battery voltage 40V / 1A

Size: 217x170x311mm

Weight: 7,6 Kg

HEAD GALOOMA 1500W art. 04913



BATTERY FOR GALOOMA art. 04992



CHARGER FOR GALOOMA art. 04914/1



SATEL ONE 600W art. 04134



SATEL ONE is a portable flash designed with built-in battery making it a wire-free, maximum power output reaches 600Ws. It is designed with touch screen and it has the ability to connect with each other when the channel is set to the same. Built-in 2.4G receiver could be compatible with high speed trigger to achieve 1/8000 shutter speed.



SATEL ONE BATTERY art. 04134/1



*LI-ION battery spare part for
flash SATEL ONE 600W*

SPIRAL SYNC CABLE
2,5mm art. 04373



Art. 04373
Flash cable

SYNC CABLE FOR
TRIGM. art. 04171/1



Art. 04171/1
Trigmaster cable

LAMPADA 800W
art. 04610/1



Art. 04610/1
Bulb for DG-800.

FLUO 16W
art. 04327/1



Art. 04327/1
Fluorescent 16W E14.

SYNC CABLE 2,5mm
3m art. 04221/1



Art. 04221/1
Flash cable.

TRIGM. PC CABLE
art. 04171/2



Art. 04171/2
Trigmaster cable

MODEL LIGHT 50W
art. 04124



Art. 04124
Model light 50W.

FLUO 28W
art. 04326/1



Art. 04326/1
Fluorescent 28W E27.

SYNC CABLE 3,5mm
5m art. 04221/2



Art. 04221/2
Flash cable.

JACK ADAPTER
3,5/6,35 art. 04171/3



Art. 04171/3
Trigmaster adapter

MODEL LIGHT
60W art. 04222



Art. 04222
Model light 60W E27.

METAL HALIDE LAMP
150W art. 04366/1



Art. 04366/1
Model light for serie MH.

SYNC CABLE 6,35mm
5m art. 04221



Art. 04221
Flash cable

BALLAST
art. 04368/2



Art. 04368/2
Ballast for FL-500.

MODEL LIGHT
250W art. 04710



Art. 04710
Model light 250W E27.

FLUO 27W
art. 04368/1



Art. 04368/1
Fluorescent for FL-500.

POWER CORD 5m
art. 04220



Art. 04220
Flash cable.

BALLAST
art. 04611/4



Art. 04611/4
Ballast for FL-900 e 1100.

MODEL LIGHT
300W art. 04903M



Art. 04903M Model light
for Star Light

FLUO DULUX L 55W
art. 04611/1



Art. 04611/1
Fluorescent per FL

POWER CORD
W/DIMMER art. 04398



Art. 04398
DG-800 cable

BATTERY HOLDER
art. 04235



Art. 04235 Battery holder
for STX.

MODEL LIGHT
650W art. 04907M



Art. 04907M Model light
for Setlight

SET OF FLASH TUBE
art. 04800/1



Art. 04800/1 Flash tube
set for Ample.

FLASH FEEDER COMPACT ECO ART. 04160/1



A complete unit is built-in one heavy duty case. Fast charger is included in the case.

Features:

Output 230V 50Hz or 115V 50Hz or 100V 60Hz

Sealed lead acid batteries - no memory effect.

Easy replaceable internal battery pack.

Connector for external battery pack (Feeder Battery Case) for extending the autonomy.

Built-in universal multiple fast charger.

Charging from the mains 100-240V 50/60Hz.

Charging from a car or other external battery 12/24V

Possibility of connecting external battery via clamps.

Output for charging external battery packs and cases.

All protection (short circuit protection and polarity protection, protection against over charging and over discharging).

Everything built-in a single case, compact shock resistant casing, water resistant (when closed).

Easy to carry.

All compact flash units and most of power pack flash units (up to 3200W/s) can be run by Flash Feeder Compact Eco. You can run with it your computer or any other electronic device too. It is not only a battery flash but a device in which you simply plug in studio flash units and start shooting.

Its advantage comparing to battery flash units is that a photographer can use his own favorite studio flash units including all accessories he/she already has.

COMPACT BATTERY CASE art. 04161



Using additional Battery Case to triple the energy.

BATTERY PACK art. 04162



Battery pack (spare part) for Flash Feeder Compact Eco.

DC POWER CORD W.CIGAR. art. 04163



DC POWER CORD W.CLAMPS art. 04164



DC POWER CORD FOR EXT. CHARGE art. 04165



DC POWER CORD FOR BATTERY CASE art. 04166



SOFTBOX 38x38cm art. 04399



Square folding softbox. Screen size is 38x38cm. Add ring to adapt to any kind of flashes.

SOFTBOX E OCTOBOX



Can you imagine setting up your softbox in 3 minutes? No matter outdoor or in studio, foldable Beauti dish save you valuable time on your job. Softbox and Octobox have inside surface silver. Dual diffuser for maximum even distribution light. Add ring to adapt to any kind of flashes.

BEAUTY DISH



Can you imagine setting up your softbox in 3 minutes? No matter outdoor or in studio, foldable Beauty dish save you valuable time on your job. Beauty dish have inside surface white or silver. Diffuser for maximum even distribution light. Add ring to adapt to any kind of flashes.

- Art. 04985 Beauty dish silver Ø70cm
- Art. 04987 Beauty dish silver Ø100cm
- Art. 04986 Beauty dish white Ø70cm
- Art. 04988 Beauty dish white Ø100cm
- Art. 04996 Beauty dish silver with grid Ø70cm

- Art. 04976 Softbox 60x90cm
- Art. 04977 Softbox 30x150cm
- Art. 04978 Softbox 80x120cm
- Art. 04979 Softbox 75x75cm
- Art. 04980 Softbox 90x90cm

Art. 04994 Softbox 60x90cm with grid

Art. 04993 Softbox 30x150cm with grid

- Art. 04983 Octobox Ø80cm
- Art. 04984 Octobox Ø110cm

Art. 04995 Octobox Ø80cm with grid

RINGS FOR SOFTBOX E BEAUTY DISH

- Art. 04971 ring for Richter/Hensel
- Art. 04970 ring for Bowens
- Art. 04972 ring for Elinchrom
- Art. 04974 ring for Broncolor
- Art. 04975 ring for Broncolor (large)
- Art. 04973 ring for Profoto

DG-800 art. 04610



Quartz continuous light 3200°K

Features:

Spot-flood rear knob.

Ceramic lamp socket.

Aluminium housing.

Aluminium reflector.

Power cable 5m with dimmer.

4 leaf barndoor and wire mesh included.

SOFTBOX FOR DG-800



SOFTBOX 60x60cm
art. 04322

SOFTBOX 90x90cm
art. 04322/1

BARNDOOR W.GRID FOR DG-800 art. 04610/3



KIT FLUORESCENT LIGHT Art. 04326



Kit Fluorescent Light contains: 2 item 04326/2, 2 folding softboxes 50x50cm, 2 stand 70-240cm, 8 spiral fluorescent bulbs 28W

FLUORESCENT LIGHT Art. 04326/2

Fluorescent light utilizes 4 pieces of spiral fluorescent bulbs to illuminate the area with powerful cool light quietly. With the cool lighting, photographers can work in a more comfortable environment; the light can be put near the shooting object without harming it. It provides perfect projection angle to cover a studio. It is designed with 2 power switches to control the light output. A 50x50cm foldable softbox is included for softening the light



BARNDOOR FOR DG-800 art. 04610/2



MH-800 IMAGERS art. 04366

Daylight balance lamp with colour temperature of 5200°K. Efficiency: 800W, power consumption: 150W. MH-800 comes with standard 65° degree reflector, protective mesh, 150W 5200°K Metal Halide Bulb.

Features:

Voltage: 220-240Vac

Ballast: electronic, self-contained.

Bulb life: 7000 hours

Lumen 12500

Colour temperature: 5200°K

Warm-up time: 5 minutes

Off-On wait period: 10 minutes

Thermo protector: yes

Casing: aluminium

Protective cap: optional

Mounting bracket: 5/8"/16mm spigot

Reflector: standard included

Power cable: 3,5m

Fuse: 3A

Size: 13x13x22cm

Weight: 1 Kg.

MH-2400 IMAGERS art. 04367

Daylight balance lamp with colour temperature of 5200°K. Efficiency: 2400W, power consumption: 450W. MH-800 comes with protective cap and 3 150W 5200°K Metal Halide Bulbs.

Features:

Voltage: 220-240Vac

Ballast: 3 electronic, self-contained.

Bulbs life: 7000 hours

Lumen 37500

Brightness: switch to 1,2,3 bulbs

Colour temperature: 5200°K

Warm-up time: 5 minutes

Off-On wait period: 10 minutes

Thermo protector: yes

Casing: aluminium

Protective cap: included

Mounting bracket: 5/8"/16mm spigot

Reflector 90°: not included

Power cable: 3,5m

Fuse: 5A - Size: 13x13x30cm

Weight: 2 Kg.

METAL HALIDE BULB art 04366/1**4 LEAF BARNDOR 04366/2****STANDARD REFLECTOR 65° art. 04366/3****WIDE ANGLE REFLECTOR art. 04366/4****REFLECTOR 90° art. 04366/5****PROTECTIVE CAP art. 04366/7****SOFTBOX FOR MH SERIES****AND FLASH "BOWENS"**

SOFTBOX FOR MH SERIES
size 60x60cm art. 04613

SOFTBOX FOR MH SERIES
size 90x90cm art. 04614

ROUND SOFTBOX FOR MH SERIES
size Ø 120cm art. 04616

ROUND SOFTBOX FOR MH SERIES
size Ø 140cm art. 04617

Professional softboxes with a ring mount for MH Imagers and "Bowens" flashes. Dual diffusers for maximum distribution of light.

FL-500 IMAGERS art. 04368

Professional, fluorescent cool, day-light balanced. 5400°K. Efficiency: 500W, power consumption: 81W. You can switch to 1,2 or 3 lights On or Off to control the brightness and keep the same colour temperature.

Features:

Power supply: 220/240Vac - Electrical consumption: 81W - Bulb life: 5000 hours - Lumen: 1900x3 - Brightness control: yes, selection 1+2+3 tubes - Casing: aluminium - Magnetic filter holder included - Power cable: 3,5m - Fuse: 1A - Size 7,5x31x31cm - Weight: 0,9 Kg

FL-900 IMAGERS art. 04611

Professional, fluorescent cool, day-light balanced 5400°K. Efficiency 900W. Power consumption: 220W. FL-900 has built-in 4 double barrel fluorescent tubes "Dulux L55W Osram". You can switch 2+2 lights On or Off to control the brightness and keep the same colour temperature.

Features:

Power supply: 220-240Vac - Electrical consumption: 220W - Bulb life: 8000 hours - Lumen: 3000x4 - Colour temperature: 5400°K - Brightness control: yes, selection 2+2 tubes - Casing: aluminium - Power cable: detachable 4,5m - Fuse: 2A - Size: 60x34x5cm - Weight 4,5 Kg

FL-1100 IMAGERS art. 04612

Professional, fluorescent cool, day-light balanced 5400°K. Efficiency 1100W. Power consumption: 330W. FL-1100 has built-in 6 double barrel fluorescent tubes "Dulux L55W Osram". You can switch 2+2+2 lights On or Off to control the brightness and keep the same colour temperature.

Features:

Power supply: 220-240Vac - Electrical consumption: 330W - Bulb life: 8000 hours - Lumen: 3000x6 - Colour temperature: 5400°K - Brightness control: yes, selection 2+2+2 tubes - Casing: aluminium - Power cable: detachable 4,5m - Fuse: 2A - Size: 60x46x6cm - Weight 5,8 Kg

7 COLOURED FILTERS art. 04368/3**BAG FOR FL-900 art. 04611/2**

Bag for FL-900
Size: 60x46x9cm.

BAG FOR FL-1100 art. 04612/2

Bag for FL-1100
Size: 60x62x9cm.

3W LED ATTACHMENT art. 04315



LED 3W light panel is a versatile lighting attachment for portable speed light units. It is easy to attach onto the flash head, so user can have constant light, or flash light with a flip panel. It is also able to bounce the flash light to get a soft lighting effect. The unit is light weight, simple to use, has full or half power switch. A special lens is placed in front of the LEDs, to disperse the light to minimize uneven illumination, normally associated with this type of light. Total light output is 150 lux/m. It is superb to use with DSLR camera with movie capability, or whereas constant light is needed. Use 4 standard AA alkaline batteries can last for 1 hour. - Size: 7,5x11cm

LED AMARAN 10W AL-160 art. 04239



LED 10W light panel is a versatile lighting attachment to mount directly to camera or videocamera. Is it possible to assemble two or more units through their joint to create a bigger lighting panel.

Features:

LED numbers: 160 - Colour temperature: 5600°K and 3200°K with orange filter included. - Output power: 10W - Reflection angle: 65° - Voltage: 5,5V - 9V - Power control: dimmerable - Battery: 6 AA 1,5V or lithium NF-F 550, NP-FM55H, NP-FH60 not included - Size: 151x56x110mm - Weight: 325g

LED AMARAN 18W AL-198/A art. 04239/1



LED 18W light panel is a versatile lighting attachment to mount directly to camera or videocamera. Is it possible to assemble two or more units through their joint to create a bigger lighting panel.

Features:

LED numbers: 198 - Colour temperature: 5600°K and 3200°K with orange filter included. - Output power: 18W - Reflection angle: from 25° to 65° - Voltage: 5,5V - 9V - Power control: dimmerable - Battery: 6 AA 1,5V or lithium NF-F 550, NP-FM55H, NP-FH60 not included - Size: 51x56x110mm - Weight: 325g

LED AMARAN 18W AL-198/C art. 04239/2



LED 18W light panel is a versatile lighting attachment to mount directly to camera or videocamera. Is it possible to assemble two or more units through their joint to create a bigger lighting panel. Color temperature adjustment function.

Features:

LED numbers: 198 - Colour temperature: from 5600°K to 3200°K adjusted function. - Output power: 18W - Voltage: 5,5V - 9V - Power control: dimmerable - Battery: 6 AA 1,5V or lithium NF-F 550, NP-FM55H, NP-FH60 not included - size: 151x56x110mm - Weight: 325g

LED AMARAN AL-528



Amaran AL-528 is the ultimate LED video light (narrow angel bulb). It features strong and steady light, manual brightness control, and uses PWM technology to decrease power dissipation. It is expandable for maximum brightness, small for easy portability, and has an efficient dual power supply system.

LED AMARAN AL-528W Art. 04102 spot lighting angle 25°

Features:

Intense spot lighting angle 25°
Digital brightness display
Double power supply system
Charges batteries while powered by AC
Battery power indicator
High colour rendering LEDs (RA<85)
High efficiency, energy saving bulbs
Carrying case included

LED AMARAN AL-528S Art. 04103 lighting angle 75°

Features:

Lighting angle 75°
Digital brightness display
Double power supply system
Charges batteries while powered by AC
Battery power indicator
High colour rendering LEDs (RA<85)
High efficiency, energy saving bulbs
Carrying case included

AMARAN LED RINGFLASH



Amaran LED Ringflash is the perfect macro lighting solution for your DSLR camera.

Features:

New LED flash technology, providing continuous, stable light - Brightness adjustment wheel - Flash mode light output is twice as high as continuous mode - Unique lamp mount to accommodate hotshoe or lenses - Works with flash triggers - Half-pressing shutter activates AF-assist lamp - Three stops of brightness adjustment - New functions to meet higher shooting demands - Left and right flash for more dynamic effects - The best tool for your macro photography needs.

AMARAN LED RING FLASH FOR NIKON art. 04144

AMARAN LED RING FLASH FOR CANON art. 04145

BATTERY NP-F750A art. 04135

Special battery 7,4V for items: 04329, 04329/1, 04329/2, 04102, 04103, 04393



KIT LED DV-300F2

Art. 04393

Kit LED DV-300F2 allows you to control color temperature and brightness of multiple LED light through any unit that equipped with mutual control function. Various channels can be chosen for better adjustment and contribute on fast lighting setup. Saving up to 89% of energy, with adjustable temperature of 3000°K-8000°K, high CRI (<95% Ra) and LCD display, DV-series LED panel is our must-have equipment in all videography environment.

Features:

LED bulbs: 300pcs - Power: 18W

Colour temperature: 3000-8000°K

Control: variable - Angle: 25° - Power source: DC 7,4V

Size: 200x41x45mm - Mutual control: yes



CABLE 9V DC 3A

art. 04136



AC power cord for Kit LED DV-300 F2 item 04393 (accessory)



SABER ONE

Art. 04391

Saber One is a handled LED light stick with the new mutual technology. Colour temperature could be adjustable from 3000 to 8000°K stepless, with dimmable power output, 4 colour temperatures 3200, 5000, 5500, 8000°K are pre-set. It is with built-in battery, aluminium housing, grid handle, kit bag and charger. It is very handy and flexible, easy to carry around and suitable for portrait as a fill light.

Features:

No. of LED: 360

Power: 22W

Colour temperature: 3000 to 8000°K

Power control: stepless dimmable

Angle of illumination: 60 deg

Input: DV 12V

Size: 605x60x60mm

Mutual control: yes, 3 channels.



2000W LED LOCATION KIT Art. 07250



This 2000 Watt Location Light Kit is ideal for in-home and on-location photo shoots! Each of the two cool-running Savage LED lights produce the equivalent of 1000 watts of incandescent light (13000 lumens when included reflectors are used) while using only 100 watts of electricity and providing 50000 hours of usage. Kit consists of two 1000 watt LED chip studio lights, two 7" reflectors, two 8' heavy duty light stands, two AC universal power cords and one heavy duty carry bag. The stepless power adjustment (0-99) with digital read out ensures output consistency, with minimal fluctuations in Kelvin temperature. CRI: 85 - DB: 35 - K° 5600 - Lumens at 1m: 13000 w.reflector. Voltage 100/240

Kit includes:

- 2 1000W LED light heads*
- 2 8' Light stands*
- 2 7" reflectors*
- 2 AC universal power cords*
- 1 heavy-duty rolling case*



1000W LED LOCATION Art. 07250/1



Individual light head also available separately from kit (accessories not included.)

This 1000 Watt Location Light is ideal for in-home and on-location photo shoots! Savage LED light produces the equivalent of 1000 watts of incandescent light (13,000 lumens when included reflectors are used) while using only 100 watts of electricity and providing 50,000 hours of usage.

Features:

- The stepless power adjustment (0-99) with digital readout ensures output consistency from one job to the next.*
- Front mount allows the user to attach most light modifiers through the use of a Bowens speedring adapter.*
- LED technology allows the user to vary power from the lowest to the highest light output with only minimal fluctuations in Kelvin temperature (+/- 200K) and is 5600K at full power.*
- High-intensity LED chip provides up to 50,000 hours of light, eliminating costly bulb replacement.*

600W LED PORTRAIT KIT Art. 07251



The new Savage LED Portrait Kit is an ideal lighting solution for both studio work and location photography. Each of the two high-powered lights comprise 176 chip on board LEDs, which together produce the equivalent of 600W incandescent light while only utilizing 70W of electricity. The LED Portrait Kit provides a 5600K daylight balanced light source, and features a stepless dimmer for maximum light control. Two included 20" softboxes pop open for quick and easy setup to create soft, even lighting for high-quality portraiture. A padded carry bag allows for convenient transportation, and also holds extra storage space, allowing photographers to pack extra accessories into one bag. CRI: 90 DB: 10 - K°5600 - Lumens at 1m: 856 w.diffuser - Voltage 100/240

Kit includes:

- Two dimmable 176 chip on board LED lights*
- Two quick-open softboxes with detachable baffles*
- Two 6' light stands*
- Two protective pouches for LED lights*
- One padded carry bag*



**MONITOR V-SCREEN
VS1 Art. 04105**



V-Screen is an ultra-thin 7" TFT-LCD monitor featuring a crystal clear WVGA display, low power consumption, multiple aspect ratios, and more. It accepts HDMI, AV (audio/video 1/ video 2) and analog inputs from your DSLR or camcorder. V-Screen also includes a double power supply, universal hot shoe mount, and sunshade cover.

Features:

Supports various signal inputs (HDMI, YPbPr & AV)
- Multiple shortcut options
- Double power supply - Intelligent charging - 16:9, 4:3 and full display ratios - Speaker and headset stereo output - Firmware updates via USB - Universal hot shoe mount with swivelling head - Sunshade cover to monitor in bright sunlight - Uses industry-standard 1/4" screw mount - Fits various combinations with magic hand.

**APUTURE V-RIG
MR-V1 art. 04146**



V-RIG MR-V1 is a bracket giving you balance, stability and comfort when you need it most. Compatible with DSLRs and camcorders, it is versatile and convenient, easy to assemble.

APUTURE V-RIG MR-V2 SET art. 04147



V-RIG MR-V2 SET fits most DSLRs and camcorders, made of steady and strong material, precise focus control and more, which contributes a steady and great job. Comprehensive with V-WHEEL and V-MATTE BOX.

**V-CONTROL UFC-1
art. 04151**



V-Control UFC-1 can work in both modes including still and video. Still mode is for taking photographs, Video mode is for recording videos. Total exposure & live-view control by seven versatile buttons and center control wheel. And more, save & limit the focus area and control the shutter.

Features:

World's 1st mode-switching USB focus device - Total exposure control (shutter, aperture, ISO, EC) - Total live-view control - Compatible with many accessories - LCD display for adjustment settings - Multiple focus options in still mode - Two USB ports for ergonomic flexibility - Simple operation & easy portability.

**V-WHEEL
art. 04149**



Precise focus, fits lenses from 52 to 86mm. Easy to mount. Gear drive front/back mountable to fit various brands.

**MOBILE RIG DRG-B-4
Art. 04333**



Taking video steady by one hand only. Ball head enables various angle recording. Adjustable position on bracket to balance the camera. Counter weight equipped to balance the camera. Super-fiction handle.

**STABILIZING STAND
art. 04334**



Camera stabilizer is a well finishing stabilizer. The aluminium structure can lighten the weight of the stabilizer and is more durable. A precision of 3-axis gimbals has highlighted the stability and effective of control.

DOLLY Art. 04337



It has a durable aluminium platform which can handle heavy camera equipment but at the same time won't affect the smooth motion of dolly. The platform also provides two 1/4" female threaded ports and one 1/4" male threaded port which allow user to use different accessories like LED light, LCD monitor, fiction arm, etc.

ARTICULATING ARMS



The articulating arms are designed for your DSLR camera or camcorder, they provide multi-angle movement for a wide range of equipments including LED light, stereo microphone, LCD monitor, etc. which maximize the flexibility for your shooting.

ARTICULATING ARM 180mm Art. 04335

ARTICULATING ARM 280mm Art. 04336

CAMERA CAGE Art. 04332



Camera Cage is a holder for video and filming use. The base plate has applied the multi holes design which allow user to switch the screw to any hole. The screw has also attached with a 3/8" to fit all camera needs. The other side of Camera Cage is an adjustable cold shoe which can adjust up and down. It can fit with small LED light or flash guns.

TROLLEYBAG art. 04234



Strong trolleybag size 95x26x27cm to contain stands, tripods, flashes or continuous lights.

SOFTBAG art. 04212



Softbag for flashes or continuous lights. Size 35x26x35cm

SOFTBAG art. 04232



Softbag for stands. Size 97x28x13cm

SOFTBAG art. 04233



Softbag for stands. Size 110x24x12cm

back grounds

Voi pensate al soggetto, al fondale ci pensiamo noi !

Abbiamo soluzioni di ogni genere: potrete scegliere le fantasie, le dimensioni, i colori, i materiali. Offriamo modelli che si piegano ai vostri voleri (ed anche agli spazi sempre più ridotti).

Una gamma che soddisferà ogni vostra esigenza creativa ed ogni vostro problema tecnico.

You think of the subject, we take care of the background ! We have any kind of solution: you can choose patterns, dimensions, colors, materials. We offer models that satisfy your needs (even for smaller spaces). A range of products that will satisfy every creativity and every technical problem. A range of products that will meet all your creative requirement and your technical problem.

FOLDING SYSTEM FOR FLEX MODELS



RELIEF PAPER BACK

Paper backgrounds for still-life available in 11 different colours with a suitable relief effect.



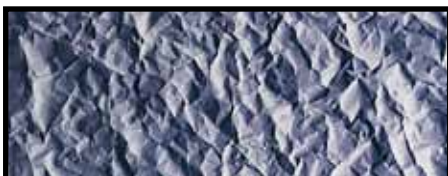
RELIEF PAPER BACK YELLOW
size 90x110cm art. 07050



RELIEF PAPER BACK SALMON
size 90x110cm art. 07059



RELIEF PAPER BACK OCHRE
size 90x110cm art. 07060



RELIEF PAPER BACK INDIGO
size 90x110cm art. 07051



RELIEF PAPER BACK BLUE
size 90x110cm art. 07052



RELIEF PAPER BACK RED
size 90x110cm art. 07053



RELIEF PAPER BACK GREEN
size 90x110cm art. 07054



RELIEF PAPER BACK ROSE
size 90x110cm art. 07055



RELIEF PAPER BACK BROWN
size 90x110cm art. 07056

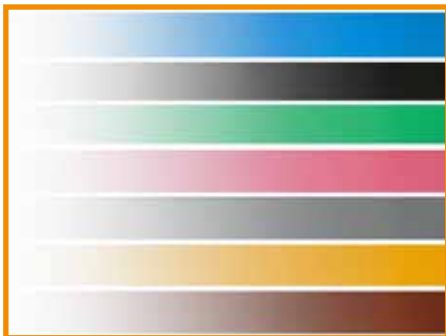


RELIEF PAPER BACK BLACK
size 90x110cm art. 07057



RELIEF PAPER BACK MAGENTA
size 90x110cm art. 07058

KIT 7 GRADUATED PAPER
art. 07200



Kit with 7 graduated paper backgrounds for still-life. Available colours are: blue, black, green, red, grey, yellow and brown.

Every background sizes 80x110cm

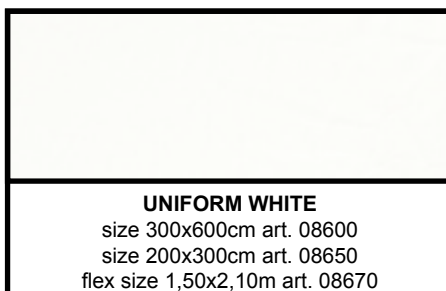
UNIFORM



Polypropilene fullcolour woven-non-woven backgrounds available in 9 different colours.

Backgrounds 3x6 and 2x3m have a cardboard core Ø50mm.

Flex models are folded in a circular bag Ø74cm.



FULLCOLOR

Washable cotton muslin backgrounds available in 4 different colours. The backgrounds 3x6m and 2x3m are packed in easy to carry knapsacks. Flex models are folded in a circular bag Ø74cm.

RAINBOW



Polypropilene woven-non-woven backgrounds available in 9 different colours. Flex models are folded in a circular bag Ø74cm.



RAINBOW LONDON
flex size 1,50x2,10m art. 08573



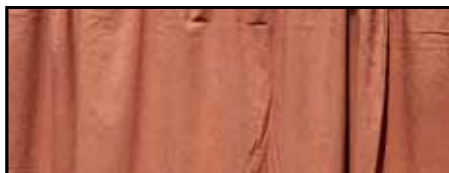
RAINBOW VENICE
flex size 1,50x2,10m art. 08574



RAINBOW CAIRO
flex size 1,50x2,10m art. 08575



FULLCOLOR BLU COBALTO
size 300x600cm art. 08033
size 200x300cm art. 08083
flex size 1,50x2,10m art. 08133



FULLCOLOR BROWN
size 300x600cm art. 08026
size 200x300cm art. 08076
flex size 1,50x2,10m art. 08126



RAINBOW PRAGUE
flex size 1,50x2,10m art. 08570



RAINBOW PARIS
flex size 1,50x2,10m art. 08576



FULLCOLOR WHITE
size 300x600cm art. 08031
size 200x300cm art. 08081
flex size 1,50x2,10m art. 08131



RAINBOW SEATTLE
flex size 1,50x2,10m art. 08571



RAINBOW MADRID
flex size 1,50x2,10m art. 08577



FULLCOLOR BLACK
size 300x600cm art. 08031
size 200x300cm art. 08081
flex size 1,50x2,10m art. 08131



RAINBOW CARACAS
flex size 1,50x2,10m art. 08572



RAINBOW TOKYO
flex size 1,50x2,10m art. 08578

GLAMOUR BACK SILVER
art. 03001



Laminated background silver size 1,3x2,2m

GLAMOUR BACK GOLD
art. 03002



Laminated background gold size 1,3x2,2m

DIGITAL PHOTO KIT art. 07210

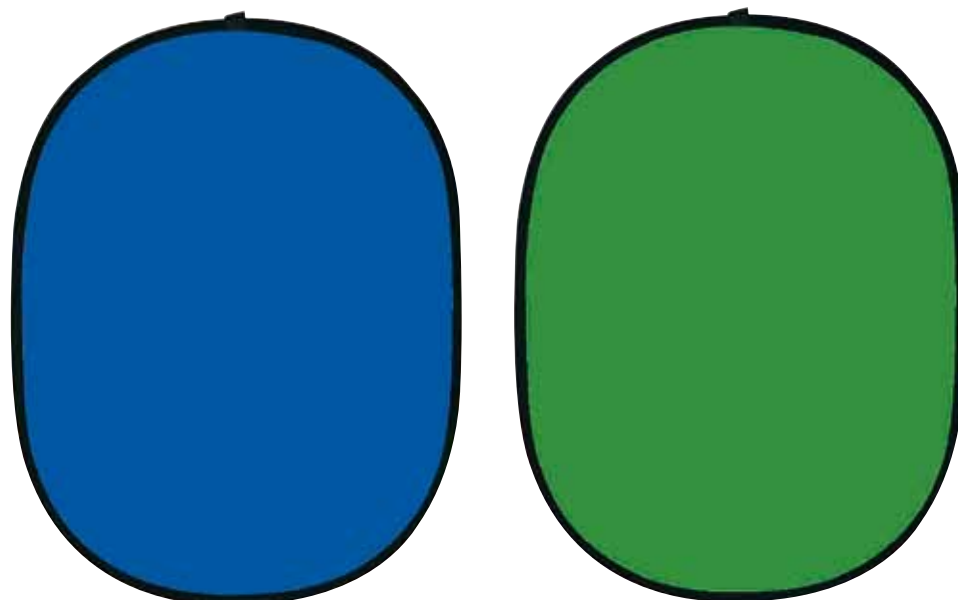


A compact, yet versatile digital photographic kit. Perfect for in-home or on-location use. Each kit includes: 150x180cm collapsible green screen, quality aluminium background stand, 120 digital backgrounds (compatible with any photo editing software), Adobe ® Photoshop ® elements trial software.

Digital Photo Effects Made Easy!

1.  Hang Green Screen
2.  Take digital photo
3.  Install Software (included)
4.  Replace Background!

CHROMA KEY FLEX PANEL art. 04328



Flex panel collapsible double-face green and blue screen size 158x193cm

TRANS-LUM BD
art. 07226



*Translucent flexible plastic background, looks like frosted glass. Easily cuts with scissors. Allows diffused light to pass.
Size: 1,35x5,5m*

BD VINYL BACKGROUNDS

BD vinyl backgrounds size 2,72x6m available in three colours: White Matt, Black Matt and Chroma Green (chroma key). Vinyl backgrounds are rolls on sturdy aluminium cores to prevent wrinkles.



BD VINYL BACKGROUND
WHITE MATT
size 272X600cm art. 07201

BD VINYL BACKGROUND
BLACK MATT
size 272X600cm art. 07202

BD VINYL BACKGROUND
CHROMA GREEN
size 272X600cm art. 07235



BD paper backgrounds are available in the following sizes: 1,35x11m (50 different colours) 2,72x11m (50 different colours) and 3,56x30m (5 different colours).

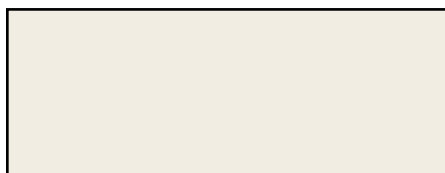
Backgrounds roll wrapped around a Ø50mm for size 1,35x11m and 2,72x11m and Ø70mm for size 3,56x30m.



**BD PAPER BACK
BLUE GRAY**
(RGB 193-194-196)
size 1,35x11m art. 07108/2
size 2,72x11m art. 07108



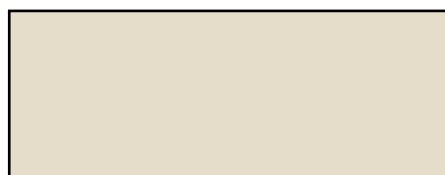
**BD PAPER BACK
STONE GRAY**
(RGB 169-178-187)
size 1,35x11m art. 07170A/2
size 2,72x11m art. 07170A



**BD PAPER BACK
PHOTO GRAY**
(RGB 236-232-220)
size 1,35x11m art. 07140/2
size 2,72x11m art. 07140



**BD PAPER BACK
GRAYSTONE**
(RGB 142-151-160)
size 1,35x11m art. 07107/2
size 2,72x11m art. 07107



**BD PAPER BACK
SILVER GRAY**
(RGB 222-213-196)
size 1,35x11m art. 07110/2
size 2,72x11m art. 07110



**BD PAPER BACK
STORM GRAY**
(RGB 163-163-163)
size 1,35x11m art. 07141/2
size 2,72x11m art. 07141
size 3,56x30m art. 07141/1



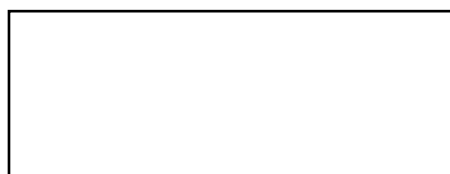
**BD PAPER BACK
SUPER WHITE**
(RGB 255-255-255)
size 1,35x11m art. 07101/2
size 2,72x11m art. 07101
size 3,56x30m art. 07100/1



**BD PAPER BACK
PURSUIT GRAY**
(RGB 224-213-207)
size 1,35x11m art. 07111/2
size 2,72x11m art. 07111



**BD PAPER BACK
DOVE GRAY**
(RGB 124-125-114)
size 1,35x11m art. 07106/2
size 2,72x11m art. 07106



**BD PAPER BACK
SOFT GRAY**
(RGB 233-233-233)
size 1,35x11m art. 07190/2
size 2,72x11m art. 07190



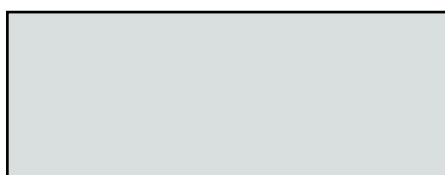
**BD PAPER BACK
PLAZA GRAY**
(RGB 203-203-203)
size 1,35x11m art. 07109/2
size 2,72x11m art. 07109



**BD PAPER BACK
DARK GRAY**
(RGB 165-163-164)
size 1,35x11m art. 07172/2
size 2,72x11m art. 07172



**BD PAPER BACK
ERMIN GRAY**
(RGB 241-237-228)
size 1,35x11m art. 07105/2
size 2,72x11m art. 07105



**BD PAPER BACK
STEEL GRAY**
(RGB 205-215-217)
size 1,35x11m art. 07150/2
size 2,72x11m art. 07150



**BD PAPER BACK
THUNDER GRAY**
(RGB 104-109-113)
size 1,35x11m art. 07103/2
size 2,72x11m art. 07103



BD PAPER BACK
BLACK
(RGB 1-1-1)
size 1,35x11m art. 07102/2
size 2,72x11m art. 07102
size 3,56x30m art. 07102/1



BD PAPER BACK
VERY GREEN (Chroma Key)
(RGB 106-193-96)
size 1,35x11m art. 07135/2
size 2,72x11m art. 07135
size 3,56x30m art. 07135/1



BD PAPER BACK
MISTI BLUE
(RGB 167-213-236)
size 1,35x11m art. 07128/2
size 2,72x11m art. 07128



BD PAPER BACK
FOTO BLUE (Chroma Key)
(RGB 54-106-179)
size 1,35x11m art. 07124/2
size 2,72x11m art. 07124
size 3,56x30m art. 07124/1



BD PAPER BACK
FOTO GREEN
(RGB 1-125-73)
size 1,35x11m art. 07162/2
size 2,72x11m art. 07162



BD PAPER BACK
ALASKA BLUE
(RGB 204-222-240)
size 1,35x11m art. 07126/2
size 2,72x11m art. 07126



BD PAPER BACK
REGATTA BLUE
(RGB 0-86-143)
size 1,35x11m art. 07130/2
size 2,72x11m art. 07130



BD PAPER BACK
SPRING GREEN
(RGB 99-194-154)
size 1,35x11m art. 07174/2
size 2,72x11m art. 07174



BD PAPER BACK
CORTEZ BLUE
(RGB 140-204-229)
size 1,35x11m art. 07173/2
size 2,72x11m art. 07173



BD PAPER BACK
DEEP BLUE
(RGB 48-59-113)
size 1,35x11m art. 07129/2
size 2,72x11m art. 07129



BD PAPER BACK
JADE
(RGB 0-92-63)
size 1,35x11m art. 07136/2
size 2,72x11m art. 07136



BD PAPER BACK
BLUE HEAVEN
(RGB 1-171-222)
size 1,35x11m art. 07122/2
size 2,72x11m art. 07122



BD PAPER BACK
AQUA
(RGB 145-206-198)
size 1,35x11m art. 07165/2
size 2,72x11m art. 07165



BD PAPER BACK
STRAW
(RGB 255-242-195)
size 1,35x11m art. 07118/2
size 2,72x11m art. 07118



BD PAPER BACK
REGAL BLUE
(RGB 4-154-215)
size 1,35x11m art. 07125/2
size 2,72x11m art. 07125



BD PAPER BACK
TEAL
(RGB 43-140-149)
size 1,35x11m art. 07142/2
size 2,72x11m art. 07142



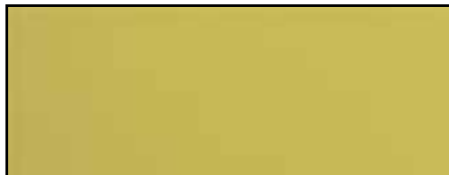
BD PAPER BACK
DAF FO DIL
(RGB 251-239-79)
size 1,35x11m art. 07132/2
size 2,72x11m art. 07132



BD PAPER BACK
MARIGOLD
(RGB 247-228-1)
size 1,35x11m art. 07169/2
size 2,72x11m art. 07169



BD PAPER BACK
NATURAL
(RGB 217-178-161)
size 1,35x11m art. 07121/2
size 2,72x11m art. 07121



BD PAPER BACK
LIGHT YELLOW
(RGB 229-212-88)
size 1,35x11m art. 07193/2
size 2,72x11m art. 07193



BD PAPER BACK
HICKORY
(RGB 95-46-31)
size 1,35x11m art. 07120/2
size 2,72x11m art. 07120



BD PAPER BACK
RED
(RGB 198-71-90)
size 1,35x11m art. 07115/2
size 2,72x11m art. 07115



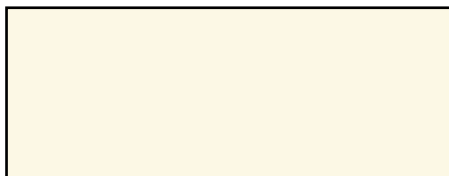
BD PAPER BACK
TANGERINE
(RGB 236-132-77)
size 1,35x11m art. 07152/2
size 2,72x11m art. 07152



BD PAPER BACK
PASTEL PINK
(RGB 253-225-221)
size 1,35x11m art. 07112/2
size 2,72x11m art. 07112



BD PAPER BACK
RUBY
(RGB 176-114-103)
size 1,35x11m art. 07138/2
size 2,72x11m art. 07138



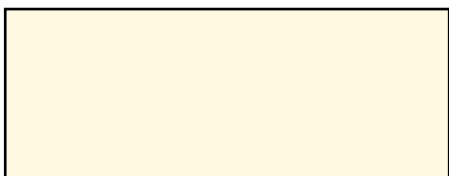
BD PAPER BACK
CREME
(RGB 249-244-222)
size 1,35x11m art. 07116/2
size 2,72x11m art. 07116



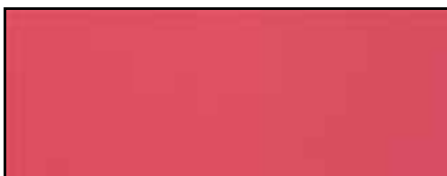
BD PAPER BACK
HOT PINK
(RGB 239-100-155)
size 1,35x11m art. 07163/2
size 2,72x11m art. 07163



BD PAPER BACK
VIOLET
(RGB 174-172-219)
size 1,35x11m art. 07134/2
size 2,72x11m art. 07134



BD PAPER BACK
IVORY
(RGB 255-247-218)
size 1,35x11m art. 07143/2
size 2,72x11m art. 07143



BD PAPER BACK
PASSION PINK
(RGB 217-74-94)
size 1,35x11m art. 07192/2
size 2,72x11m art. 07192



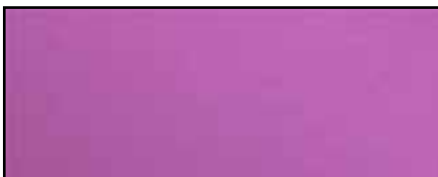
BD PAPER BACK
PURPLE
(RGB 133-98-171)
size 1,35x11m art. 07137/2
size 2,72x11m art. 07137



BD PAPER BACK
PONGEE
(RGB 243-216-171)
size 1,35x11m art. 07117/2
size 2,72x11m art. 07117



BD PAPER BACK
FLAME TONE
(RGB 228-55-49)
size 1,35x11m art. 07113/2
size 2,72x11m art. 07113



BD PAPER BACK
BOYSENBERRY
(RGB 184-76-156)
size 1,35x11m art. 07191/2
size 2,72x11m art. 07191

Condor Foto Sas
Via Prinetti, 32
20127 Milano - Italy

phone: (+39) 02 26 11 09 46
fax: (+39) 02 26 14 78 31
e-mail: condor@condor-foto.it
www.condor-foto.it
www.condor-foto-shop.it